



Fisheries and Oceans  
Canada

Pêches et Océans  
Canada

Canadian  
Coast Guard

Garde côtière  
canadienne

# Notices to Mariners

**Edition No. 04/2025**  
April 25, 2025



Safety First, Service Always

## Monthly Eastern Edition

Canada 

Notices to Mariners – Monthly Eastern Edition  
Edition No. 04/2025

Aussi disponible en français :  
Avis aux navigateurs – Édition mensuelle de l'Est  
Édition n° 04/2025

**Published under the Authority of:**

Canadian Coast Guard Programs  
Aids to Navigation and Waterways  
Fisheries and Oceans Canada  
Montreal, QC H2Y 2E7

For more information, contact [DFO.Notmar-Notmar.MPO@dfo-mpo.gc.ca](mailto:DFO.Notmar-Notmar.MPO@dfo-mpo.gc.ca).

© His Majesty the King in Right of Canada,  
as represented by the Minister of Fisheries, Oceans  
and the Canadian Coast Guard, 2025.

Cat. No. Fs152-8E-PDF (Electronic PDF, English)  
ISSN 2817-0075

Cat. No. Fs152-8F-PDF (Electronic PDF, French)  
ISSN 2817-0083

A web version is available here:

[Notices to Mariners – Monthly Editions](#) (English)

[Avis aux navigateurs – Publications mensuelles](#) (French)

## Explanatory Notes – Notices to Mariners (NOTMAR)

**Geographical positions** refer directly to the graduations of the largest scale Canadian Hydrographic Service chart (unless otherwise indicated).

**Bearings** refer to the true compass and are measured clockwise from 000° (North) clockwise to 359°; those relating to lights are from seaward.

**Visibility** of lights is that in clear weather.

**Depths** - The units used for soundings (metres, fathoms or feet) are stated in the title of each chart.

**Elevations** are normally given above Higher High Water, Large Tide (unless otherwise indicated).

**Distances** may be calculated as follows:

- 1 nautical mile = 1,852 metres (6,076.1 feet)
- 1 statute mile = 1,609.3 metres (5,280 feet)
- 1 metre = 3.28 feet

### Temporary and Preliminary Notices to Mariners – Section 1A of *Notices to Mariners*

These notices are indicated by a (T) or a (P), respectively. Please note that nautical charts are not amended by the Canadian Hydrographic Service for temporary (T) and preliminary (P) notices. It is recommended that mariners chart these corrections in pencil. For the list of charts affected by (T) & (P) notices, please refer to the current [Notices to Mariners - Monthly Summary of Temporary and Preliminary Notices](#) publication.

### Suggestions and Corrections Form

This form is specifically for suggestions and corrections to Notices to Mariners publications. It is available [online](#) and also in [fillable PDF format](#) included with the monthly publication ZIP file.

To submit comments and suggestions on possible improvements to the various publications and services: [DFO.Notmar-Notmar.MPO@dfo-mpo.gc.ca](mailto:DFO.Notmar-Notmar.MPO@dfo-mpo.gc.ca).

To report chart discrepancies and/or corrections to the *Canadian Sailing Directions* booklets: Fill out the [Marine Information Reporting Form](#) and/or email [chsinfo@dfo-mpo.gc.ca](mailto:chsinfo@dfo-mpo.gc.ca).

To report emergencies or navigational hazards: [Contact your nearest MCTS centre](#)

- VHF channel 16 (156.8 MHz)
- MF/HF frequency 2182 kHz/4125 kHz (where available)
- \*16 on a cellphone (where available)

### NOTMAR Website – Monthly Editions, Chart Corrections and Chart Patches

The NOTMAR website allows users to access the [monthly publications](#), [chart corrections](#), and [chart patches](#).

Users can subscribe for free to the [email notification service](#) to receive notifications when charts of interest are updated, including their patches, as well as when a new Monthly Edition of *Notices to Mariners* is published.

In addition, the monthly publication and related files to download, such as chart patches, can be obtained all together through the download of a single ZIP file.

## Explanatory Notes – Canadian Hydrographic Service (CHS)

### Chart Corrections – Section 2 of *Notices to Mariners*

Corrections to nautical charts will be listed in numerical order by chart number. Each chart correction listed applies only to that particular chart. Related charts, if any, will have their own specific correction listed separately.

Users should also refer to CHS *Chart 1: Symbols, Abbreviations and Terms* for additional information pertaining to the correction of charts.

The illustration below describes the elements that will comprise a typical Section 2 chart correction:

	Chart Number	Chart Title	Chart latest new edition date	Horizontal Chart Datum	Last Correction
Weekly Chart Correction Date	1312	Lac Saint-Pierre - New Edition - 10-MAY-2019 - NAD 1983			
	05-AUG-2022				LN/D. 24-SEP-2021
	Amend				46°03'32.4"N 073°03'21.6"W
		(See Chart 1 P16)		(Q2022035) LL(2177)	DFO(6410690-01)
	Chart Action	Chart 1 Reference No.	CCG Reference No.	List of Lights No.	CHS Reference No.

The last correction number is identified with the **LN/D** or **Last Notice to Mariners Number / Date**.

Mariners are advised that only the most critical changes that directly affect safety to navigation are issued in "Section 2 – Chart Corrections." This limitation is required to ensure that charts remain as clear and easy to read as possible. As a result, mariners may see minor discrepancies of a non-critical nature between information in official publications. For example, a small change in the nominal range or focal height of a light may not result in the production of a chart correction in *Notices to Mariners*, but may result in a correction in the [List of Lights, Buoys and Fog Signals](#) publication.

Note: In the case of a discrepancy between information provided on CHS charts relating to aids to navigation, and the *List of Lights, Buoys and Fog Signals* publication, the latter shall be deemed as containing the most up-to-date information.

## Explanatory Notes – Marine Communications and Traffic Services (MCTS)

### Navigational Warnings / Notices to Shipping

The Canadian Coast Guard (CCG) is implementing a number of changes to the aids to navigation system in Canada.

These changes are advertised as Navigational Warnings, formerly called Notices to Shipping<sup>1</sup>, that are broadcast by the CCG, and are then followed up with Notices to Mariners, then charts are updated by hand correction, reprints or new editions.

Mariners are advised that all relevant Navigational Warnings (NAVWARN) should be kept until superseded by Notices to Mariners or through revised charts issued by the Canadian Hydrographic Service (CHS).

NAVWARN are accessible on the applicable regional page on the [CCG Navigational Warnings](#).

CHS is reviewing the impact of these changes with CCG and together are preparing an action plan on the issuing of chart revisions.

For further information, contact your regional NAVWARN Issuing Desk.

<b>Atlantic Region (North)</b> <b>*Port aux Basques MCTS Centre</b>  “N” Series NAVWARN  Canadian Coast Guard 49 Stadium Rd. P.O. Box 99 Port aux Basques, NL A0M 1C0  Telephone: 709-695-2168 or 1-800-563-9089 Facsimile: 709-695-7784  Email: <a href="mailto:NAVWARN.MCTSPortAuxBasques@innav.gc.ca">NAVWARN.MCTSPortAuxBasques@innav.gc.ca</a>	<b>Central Region</b> <b>*Prescott MCTS Centre</b>  “Q” and “C” Series NAVWARN  Canadian Coast Guard 401 King Street West P.O. Box 1000 Prescott, ON K0E 1T0  Telephone: 613-925-0666 Facsimile: 613-925-4519  Email: <a href="mailto:NAVWARN.MCTSPrescott@innav.gc.ca">NAVWARN.MCTSPrescott@innav.gc.ca</a>
<b>Atlantic Region (South)</b> <b>*Sydney MCTS Centre</b>  “M” Series NAVWARN  Canadian Coast Guard 1190 Westmount Road Sydney, NS B1R 2J6  Telephone: 902-564-7751 or 1-800-686-8676 Facsimile: 902-564-7662  Email: <a href="mailto:NAVWARN.MCTSSydney@innav.gc.ca">NAVWARN.MCTSSydney@innav.gc.ca</a>	<b>Arctic Region</b> <b>*Iqaluit MCTS Centre</b> <i>Operational from approximately mid-May until late December.</i>  “A” Series NAVWARN  Canadian Coast Guard P.O. Box 189 Iqaluit, NU X0A 0H0  Telephone: 867-979-5269 Facsimile: 867-979-4264  Email: <a href="mailto:NAVWARN.MCTSIqaluit@innav.gc.ca">NAVWARN.MCTSIqaluit@innav.gc.ca</a>

\*Service available in English and in French.

<sup>1</sup> The expression “Notice to Shipping” was changed to “Navigational Warning” in January 2019.

## Table of Contents

<b>Section 1: General and Safety Information</b>	<b>1</b>
*505/23 Canadian Hydrographic Service – Magnetic Declination Calculations .....	1
*1207/23 Canadian Hydrographic Service – Inappropriate Geographical Names Review Process .....	1
*304/25 Canadian Coast Guard – Great Lakes Waterway Information .....	1
*401/25 Protecting the North Atlantic Right Whale: Speed Restriction Measures in the Gulf of St. Lawrence .....	2
*402/25 Canadian Hydrographic Service – Electronic Navigational Charts .....	10
*403/25 Canadian Hydrographic Service – Raster Digital Charts (BSB V3) .....	11
*404/25 Transport Canada - Ship Safety Bulletin #04/2025 .....	12
*405/25 Saguenay–St. Lawrence Marine Park - Beluga Whale Protection: Slowdown Area at the Mouth of the Saguenay Fjord and Area Closure at Baie Sainte-Marguerite .....	13
*406/25 Saguenay–St. Lawrence Marine Park and Surrounding Waters – Whale Protection .....	15
*407/25 Lac Saint-Pierre – Unlit Buoys Permanently Discontinued .....	16
*408/25 Taylors Head to / à Shut-in Island – Unlit Buoy Replaced by a Lighted Buoy .....	17
*409/25 Demarcation Bay to/à Philips Bay – Unlit Buoy Permanently Discontinued .....	17
<b>Section 1A: Temporary and Preliminary Notices</b>	<b>18</b>
Reminder – Comment Period for Active Preliminary Notices .....	18
*410(T)/25 Chenal du Havre de la Grande Entrée – Waterway Information: Wharf Closed .....	18
*411/25 Cap Éternité à/to Saint Fulgence – Obstruction Charted .....	18
*412/25 Baie des Sept-Îles – Obstruction Charted .....	19
*413/25 Mouillages et Installations Portuaires/Anchorages and Harbour Installations - Haute Côte- Nord – Obstruction Charted .....	19
*414/25 Mouillages et Installations Portuaires/Anchorages and Harbour Installations - Haute Côte- Nord – Obstruction Charted .....	19
*415(P)/25 Red Point to / à Guyon Island – Notice of Proposed Changes .....	19
*416(P)/25 Chéticamp to / à Cape St. Lawrence – Light Buoy to be Discontinued .....	20
*417(P)/25 Cap de la Tête au Chien au/to Cap aux Oies – Aid to Navigation to be Abandoned .....	20
*418(T)/25 Arctic Archipelago / Archipel de l'Arctique – Obstruction – Subsurface Moorings .....	21
*419(T)/25 Paallavvik to/à Kangiqtugaapik – Obstruction – Scientific Mooring .....	21
*420(T)/25 Clyde Inlet to/à Cape Jameson – Obstruction – Subsurface Mooring .....	21
*421(T)/25 Franklin Bay and/et Darnley Bay – Obstruction – Subsurface Mooring .....	21
*422(T)/25 Prince Albert Sound, Western Portion/ Partie Ouest – Obstruction – Subsurface Mooring .....	22
*423(T)/25 Approaches to/Approches à Cambridge Bay – Obstruction – Subsurface Buoy and Apparatus .....	22
*424(P)/25 Puvirnituq et les approches / and Approches – Racon to be Discontinued .....	22

---

<b>Section 2: Chart Corrections</b>	<b>23</b>
-------------------------------------	-----------

---

<b>Section 3: Radio Aids to Marine Navigation Corrections</b>	<b>39</b>
---	-----------

---

*425/25	Radio Aids to Marine Navigation 2025 (Atlantic, St. Lawrence, Great Lakes, Lake Winnipeg, Arctic and Pacific).....	39
---------	---	----

<b>Section 4: Canadian Sailing Directions Corrections</b>	<b>42</b>
---	-----------

---

<b>Section 5: List of Lights, Buoys and Fog Signals Corrections</b>	<b>43</b>
---	-----------

---

## Numerical Index of Canadian Charts Affected

This numerical index lists all nautical charts mentioned in this monthly edition of Notices to Mariners. Only charts appearing in Section 2 of this publication require a chart correction. The appearance of charts in all other sections, particularly those related to the correction of other nautical publications, is included here for reference.

Chart No.	Pages	Chart No.	Pages	Chart No.	Pages
1201	<a href="#">23</a>	4523	<a href="#">32, 33</a>	8046	<a href="#">38</a>
1202	<a href="#">18, 19, 23</a>	4585	<a href="#">33</a>	14853 (U.S.)	<a href="#">1</a>
1220	<a href="#">19, 23</a>	4667	<a href="#">43</a>	14882 (U.S.)	<a href="#">1</a>
1223	<a href="#">18, 23, 24</a>	4905	<a href="#">33</a>	14883 (U.S.)	<a href="#">1</a>
1226	<a href="#">19, 24</a>	4921	<a href="#">33, 34</a>	14884 (U.S.)	<a href="#">1, 45</a>
1234	<a href="#">20</a>	4934	<a href="#">34, 35</a>		
1236	<a href="#">24</a>	4954	<a href="#">18</a>		
1312	<a href="#">16, 44</a>	5027	<a href="#">35</a>		
1320	<a href="#">25</a>	5046	<a href="#">43</a>		
1432	<a href="#">44</a>	5047	<a href="#">43</a>		
1436	<a href="#">44</a>	5052	<a href="#">43</a>		
1509	<a href="#">25</a>	5062	<a href="#">36</a>		
2059	<a href="#">44</a>	5165	<a href="#">36</a>		
4013	<a href="#">26</a>	5338	<a href="#">46</a>		
4023	<a href="#">26</a>	5410	<a href="#">45</a>		
4024	<a href="#">26</a>	5449	<a href="#">45</a>		
4025	<a href="#">18</a>	5510	<a href="#">22</a>		
4116	<a href="#">18, 43</a>	5628	<a href="#">36</a>		
4117	<a href="#">26, 27, 43</a>	5629	<a href="#">36</a>		
4227	<a href="#">27</a>	6241	<a href="#">45</a>		
4233	<a href="#">27</a>	6251	<a href="#">37</a>		
4234	<a href="#">27, 28, 29, 30</a>	6273	<a href="#">37</a>		
4236	<a href="#">17</a>	7000	<a href="#">21</a>		
4241	<a href="#">44</a>	7053	<a href="#">21</a>		
4278	<a href="#">30</a>	7184	<a href="#">37</a>		
4301	<a href="#">30</a>	7212	<a href="#">37</a>		
4321	<a href="#">30, 31</a>	7220	<a href="#">38</a>		
4335	<a href="#">31</a>	7565	<a href="#">21</a>		
4340	<a href="#">32</a>	7661	<a href="#">17</a>		
4374	<a href="#">19</a>	7665	<a href="#">21</a>		
4403	<a href="#">32</a>	7668	<a href="#">22</a>		
4416	<a href="#">32</a>	7685	<a href="#">45</a>		
4464	<a href="#">20</a>	7750	<a href="#">22</a>		



## Section 1: General and Safety Information

---

### **\*505/23 Canadian Hydrographic Service – Magnetic Declination Calculations**

(Recurrent publication of notice \*505/23, originally published in the *Notices to Mariners – Monthly Eastern Edition* 05/2023 publication.)

Mariners are advised that CHS has adopted the harmonized World Magnetic Model (WMM), as found on the NCEI/NOAA website. Old compass rose declination information on CHS navigational products can be updated using this website: <https://www.ngdc.noaa.gov/geomag/calculators/magcalc.shtml#declination>. While the differences in the model declinations are small each year, they can become more significant over a large period of time.

### **\*1207/23 Canadian Hydrographic Service – Inappropriate Geographical Names Review Process**

(Recurrent publication of notice \*1207/23, originally published in the *Notices to Mariners – Monthly Eastern Edition* 12/2023 publication.)

The records of the Canadian Hydrographic Service could contain geographical names that may be considered inappropriate, offensive and derogatory. Geographical naming authorities are in the process of addressing many offensive place names, the review process is underway. For more information, about inappropriate geographical names, please see the [following announcement](#).

### **\*304/25 Canadian Coast Guard – Great Lakes Waterway Information**

(Recurrent publication of notice \*304/25, originally published in the *Notices to Mariners – Monthly Eastern Edition* 03/2025 publication.)

Reference chart: 14853 (U.S.), 14882 (U.S.), 14883 (U.S.), 14884 (U.S.)

Updated shoaling conditions for the navigational channels in the Great Lakes are available on the Canadian Coast Guard websites:

[CCG e-Nav - Shoals in the Detroit River](#)

[CCG e-Nav - Shoals in the St. Clair River](#)

[CCG e-Nav - Shoals in the St. Mary's River](#)

Great Lakes Waterways Channel Bottom Conditions and Active Shoals are available at the website:

[GCC - e-Nav Portal - Central - Great Lakes Waterways - Channel Bottom Conditions](#)

Areas		
Detroit River	North Channel	St. Clair River
Great Lakes	Lake Huron	St. Marys River
Lake Erie	Lake St. Clair	Whitefish Bay

## **\*401/25 Protecting the North Atlantic Right Whale: Speed Restriction Measures in the Gulf of St. Lawrence**

### **Purpose**

This notice describes the speed and navigational restriction zones that vessels must follow in the Gulf of St. Lawrence.

The Government of Canada has established these zones to reduce the risk of vessel colliding with North Atlantic right whales (NARW).

### **Background**

Due to changing migration patterns of North Atlantic right whales and their increased presence in the Gulf of St. Lawrence, the Government of Canada has set seasonal speed restrictions in specific zones. These speed restrictions zones are defined as “static zones”, “dynamic shipping zones”, “seasonal management areas”, a “voluntary seasonal slowdown zone” and a “restricted area”. [See the map below for details.](#)

Note: Vessels **must follow** Navigational Warnings outlining the speed restrictions. The *Interim Order for the Protection of North Atlantic Right Whales (Eubalaena Glacialis) in the Gulf of St. Lawrence, 2025* enables the issuance of Navigational Warnings (NAVWARNs) imposing speed restrictions and navigation restrictions.

Speed restriction zones are described in monthly Notices to Mariners (NOTMARs), which are published by the Canadian Coast Guard. The status of these zones is broadcasted through NAVWARNs, which are published by the Coast Guard’s Marine Communications and Traffic Services Centres.

### **CHANGES TO SPEED RESTRICTION ZONES AND MEASURES**

Based on consultations with industry and on scientific data, changes to the speed restriction zones will be effective from April 16<sup>th</sup>, 2025, while the restricted area will be implemented based on whale presence.

A voluntary seasonal slowdown of 10.0 knots over the ground spanning from Cabot Strait (a line running from Cape North NS to Cape Ray NL) to the eastern edge of dynamic shipping zone E will be implemented at the beginning and end of the North Atlantic right whale season (Spring and fall).

Please check the latest NAVWARN for all speed restrictions currently in effect.

### **SPEED RESTRICTION MEASURES FOR 2025**

These restrictions will be in effect from **April 16 to May 15, 2025**.

Note: The 30-day duration reflects the fact that an election is underway where the Caretaker Convention applies. During this period, the government must exercise restraint in its actions and only matters involving routine business and urgent matters can be considered. This period will end following the election. The continued protection of the North Atlantic right whale is an example of this kind of work and the 30-day period for the Interim Order is intended to respect the Caretaker Convention while ensuring the continuity of protective measures.

### **Exceptions**

The following exception will apply to **all** measures:

- a) a vessel in distress or providing assistance to a person or a vessel in distress;
- b) a government vessel being used:
  - i) for law enforcement activities;
  - ii) for search and rescue operations; or
  - iii) to ensure the competency of the crew or the operational readiness of the vessel or crew with respect to such activities or operations.

## STATIC ZONES

In the static zones, **all** vessels above **13 m** in length overall (LOA) must proceed at a speed of not more than 10.0 knots over the ground.

### Exclusions

Air cushion vessels operated by or on behalf of the Government of Canada that are engaged in ice-clearing activities from April to June in and around Chaleur Bay are exempted when in operation.

### 36.57 m (20-fathom) shallow water protocol exclusion

Vessels engaged in any commercial fishing activity may proceed at a safe operational speed in waters not more than 36.57 m (20 fathom) deep within the static zones.

If a notice to fish harvesters and a NAVWARN state that at least one North Atlantic right whale has been detected in waters within a static zone or its associated buffer zone that are not more than 36.57m deep, the speed limit of 10.0 knot over the ground will apply in the concerned zone(s) to all vessels above 13 m in length overall (LOA). The speed restriction will be in effect for 15 days after the day on which the whale was detected. The buffer zones associated with the static zones are located 5 miles north and south of their adjacent border in waters less than 36.57 m deep.

#### Coordinates for the northern static zone:

- 50° 20' N 065° 00' W
- 49° 13' N 065° 00' W
- 48° 40' N 064° 13' W
- 48° 40' N 062° 40' W
- 48° 03' N 061° 07.5' W
- 47° 58.1' N 061° 03.5' W
- 48° 00' N 061° 00' W
- 49° 04' N 061° 00' W
- 49° 04' N 062° 00' W
- 49° 43' N 063° 00' W
- 50° 20' N 063° 00' W

#### Coordinates for the southern static zone:

- 48° 40' N 065° 00' W
- 48° 40' N 062° 40' W
- 48° 03' N 061° 07.5' W
- 47° 58.1' N 061° 03.5' W
- 47° 10' N 062° 30' W
- 47° 10' N 065° 00' W

## DYNAMIC SHIPPING ZONES

There are five dynamic shipping zones (DSZ) located in the routing systems north and south of Anticosti Island: A, B, C, D and E

### Coordinates for the dynamic shipping zones:

Zone A	Zone B	Zone C
<ul style="list-style-type: none"><li>• 49° 41' N, 065° 00' W</li><li>• 49° 20' N, 065° 00' W</li><li>• 49° 11' N, 064° 00' W</li><li>• 49° 22' N, 064° 00' W</li></ul>	<ul style="list-style-type: none"><li>• 49° 22' N, 064° 00' W</li><li>• 49° 11' N, 064° 00' W</li><li>• 48° 48' N, 063° 00' W</li><li>• 49° 00' N, 063° 00' W</li></ul>	<ul style="list-style-type: none"><li>• 49° 00' N, 063° 00' W</li><li>• 48° 48' N, 063° 00' W</li><li>• 48° 24' N, 062° 00' W</li><li>• 48° 35' N, 062° 00' W</li></ul>
Zone D	Zone E	
<ul style="list-style-type: none"><li>• 50° 16' N, 064° 00' W</li><li>• 50° 00' N, 064° 00' W</li><li>• 49° 56' N, 063° 00' W</li><li>• 50° 16' N, 063° 00' W</li></ul>	<ul style="list-style-type: none"><li>• 48° 35' N 062° 00' W</li><li>• 48° 24' N 062° 00' W</li><li>• 48° 03' N 061° 07.5' W</li><li>• 47° 58.1' N 061° 03.5' W</li><li>• 48° 00' N 061° 00' W</li><li>• 48° 10.5' N 061° 00' W</li></ul>	

When a North Atlantic right whale is detected in a dynamic shipping zone or in the buffer zones, located 5 nautical miles south or 2.5 nautical miles from the eastern and western edges of the dynamic shipping zones:

- All vessels will be notified via a NAVWARN; and
- Vessels above **13 m** in length overall (LOA) must proceed at a speed of not more than 10.0 knots over the ground within that zone.

Even though dynamic shipping zones overlap with static zones, vessels can travel at a safe operational speed in dynamic shipping zones when they are not under speed restriction. Mariners must also keep in mind that North Atlantic right whales may be nearby.

## SPEED RESTRICTIONS IN THE DYNAMIC SHIPPING ZONES

The detection of North Atlantic right whales in one or more dynamic shipping zone(s), or in their buffer zones, will trigger a speed restriction in the concerned zone(s). The speed restriction in the dynamic shipping zone(s) will be in effect for 15 days from the date of detection. In the event of a new North Atlantic right whale detection occurring in the last 7 days of the 15-day slowdown period, the speed restriction will be extended for an additional 15 days from the date of the new detection. This would continue until no NARW are detected.

When a NAVWARN is issued implementing a speed restriction in one or more dynamic shipping zone(s), vessels above **13 m** in length (LOA) must not exceed a speed of 10.0 knots over the ground. Within any dynamic zone that is not subject to a speed restriction, mariners may proceed at a safe operational speed. Mariners are encouraged to take into consideration the potential for their vessel striking North Atlantic right whales when considering a “safe operational speed” during navigation.

## SEASONAL MANAGEMENT AREAS

Seasonal management area 1 (SMA-1) and seasonal management area 2 (SMA-2) are speed restriction areas located north and south of dynamic shipping zone E, respectively.

Within seasonal management areas, vessels above **13 m** in length (LOA):

- must restrict their speed so as not to exceed 10.0 knots over the ground from April 16th to May 15th, 2025

### Coordinates for the SMA-1:

- 49° 04' N 062° 00' W
- 49° 04' N 061° 00' W
- 48° 10.5' N 061° 00' W
- 48° 35' N 062° 00' W

### Coordinates for the SMA-2:

- 48° 24' N 062° 00' W
- 48° 03' N 061° 07.5' W
- 47° 58.1' N 061° 03.5' W
- 47° 26.69' N 062° 00' W

## RESTRICTED AREA

In the summer months, an important proportion of the total North Atlantic right whale population gathers for feeding and surface activity near the [Shediac Valley](#). Since this makes the North Atlantic right whale more susceptible to vessel collisions, a mandatory restricted area will be implemented in and near the Shediac Valley and will come into force once 80% of the restricted area is closed to fishing for the season as per the [Department of Fisheries and Oceans' right whale closure protocol](#). The restricted area will be lifted once the North Atlantic right whale detections decrease in the restricted area.

The size and location of the area are determined based on historical detection data of North Atlantic right whales. All necessary details can be found in the *Interim Order for the Protection of North Atlantic Right Whales (Eubalaena Glacialis) in the Gulf of St. Lawrence, 2025*. Triggering and lifting of the restricted area will be communicated to mariners through NAVWARNs and notices to fish harvesters.

Vessels above **13 m** in length (LOA) will be required to:

- avoid the area unless they are part of the exceptions listed in the *Interim Order for the Protection of North Atlantic Right Whales (Eubalaena Glacialis) in the Gulf of St. Lawrence, 2025*;
- transit the area at a speed not exceeding 8.0 knots over the ground if they are part of the exceptions.

The following exceptions will apply to the restricted area. The following listed vessels can travel through the area at not more than 8.0 knots over the ground:

- A vessel being used for commercial fishing;
- A vessel being used for fishing under the authority of a licence issued under the *Aboriginal Communal Fishing Licences Regulations*;
- A vessel being used for research purposes on behalf of the Government of Canada
- A vessel being used as part of the Department of Fisheries and Oceans' Marine Mammal Response Program to assist a marine mammal or sea turtle in distress or to access or retrieve a deceased marine mammal or sea turtle;
- A vessel authorized by the Government of Canada to retrieve or identify the location of abandoned or lost fishing gear;
- A vessel involved in pollution response operations;
- A vessel avoiding immediate or unforeseen danger;
- A vessel involved in research relating to right whales as part of a project that has received funding from the Government of Canada.

The following vessels can travel through the restricted area at a speed over 8.0 knots, but below 10.0 knots over the ground as required by the static speed restriction zone:

- A vessel being used by an employee of the Government of Canada or peace officer who is performing their duties.

**Coordinates for the restricted area:**

- 48°31.8' N 063°39.6' W
- 48°24.72' N 063°17.88' W
- 47°18.84' N 064°10.8' W
- 47°27.18' N 064°30.72' W

**Inclement weather exception**

Mariners will be notified in advance via a NAVWARN should the speed restriction status change in any zone or area, due to inclement weather.

Within any zone or area that is no longer subject to a speed restriction due to adverse weather conditions, mariners may proceed at a safe operational speed. Mariners are however encouraged to take into consideration the potential for their vessel striking North Atlantic right whales when considering a “safe operational speed” during navigation.

\*Non-excepted vessels are still prohibited from transiting through the restricted area.

**VOLUNTARY SEASONAL SLOWDOWN IN CABOT STRAIT**

To coincide with the North Atlantic right whales entering and exiting the Gulf of St. Lawrence in large numbers, a voluntary seasonal slowdown is being put in place in Cabot Strait from April 16<sup>th</sup> to June 24<sup>th</sup>, 2025, and from September 3<sup>rd</sup> to November 15<sup>th</sup>, 2025.

- During these periods, vessels above 13 m in length (LOA) are requested to voluntarily reduce their speed as to not exceed 10.0 knots over the ground.

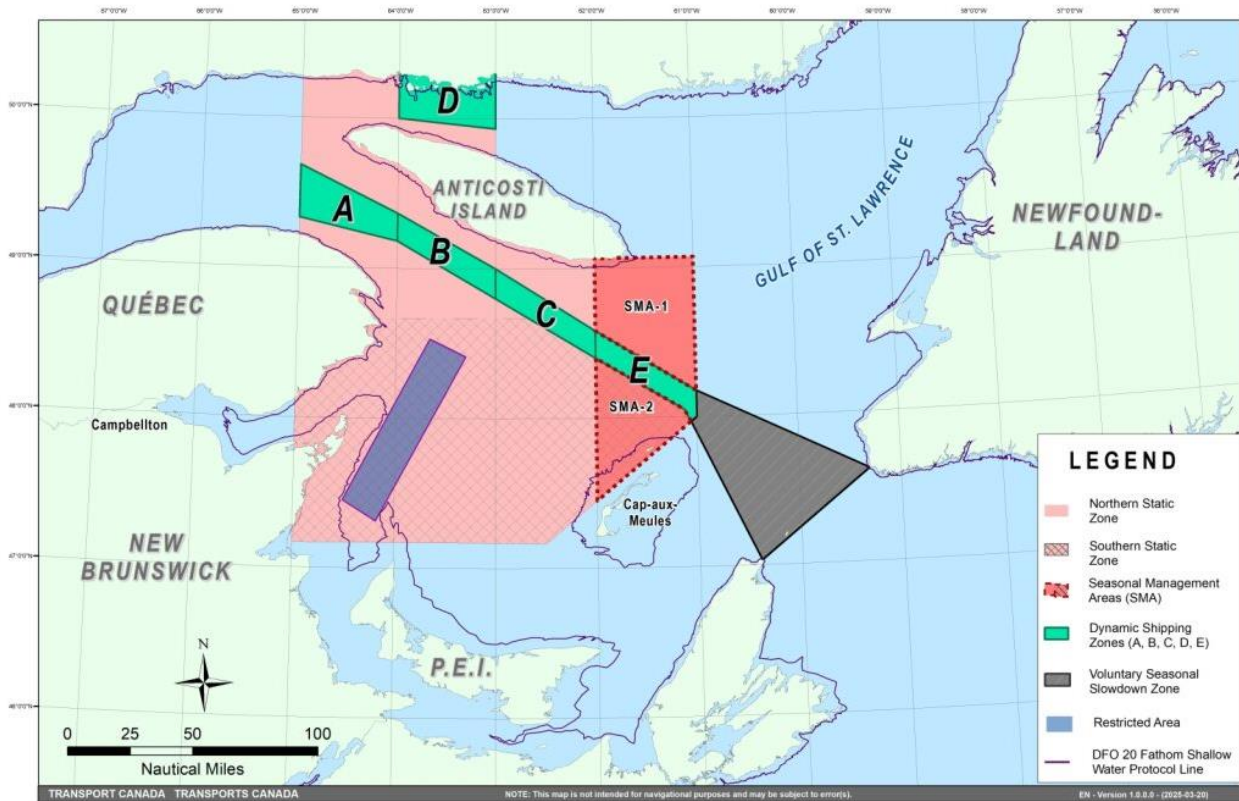
**Voluntary seasonal slowdown zone coordinates:**

- 48° 10.5' N 061° 00' W
- 47° 37.2' N 059° 18.5' W
- 47° 02' N 060° 23.7' W
- 47° 58.1' N 061° 03.5' W
- 48° 00' N 061° 00' W

**Map of the Gulf of St. Lawrence**

The following map shows

- the static zones (north and south), in pink;
- the dynamic shipping zones (A, B, C, D and E), in green;
- the seasonal management areas, in dark pink;
- the voluntary seasonal slowdown zone, in grey;
- the restricted area, in dark blue; and
- the 36.57 m (20 fathom) shallow water protocol line.



This map is for visual representation only and is not to be used for navigation or enforcement.

### ROSEWAY BASIN – AREA TO BE AVOIDED

The Roseway Basin, located approximately 20 nautical miles south of Cape Sable Island, Nova Scotia, is a critical habitat for North Atlantic right whales, which have been observed to gather in the area on a seasonal basis in Canadian waters. This critical habitat is also located near key shipping routes. In 2007, Canada, with the support of many groups with varied interests, proposed to the International Maritime Organization (IMO) the establishment of a seasonal Area to be Avoided in the Roseway Basin to protect North Atlantic right whales, which IMO accepted and adopted.

To reduce the risk of vessels colliding with North Atlantic right whales, it is recommended that vessels of 300 gross tonnages and more, in transit during the period of June 1 through December 31, avoid the Roseway Basin area. Smaller vessels are also encouraged to avoid passage through this area. If passage is necessary within the Area to be Avoided, it is recommended that all mariners decrease their vessel speed to no more than 10 knots, when safe to do so.

#### Roseway Basin coordinates:

- 43° 16' N 064° 55' W
- 42° 47' N 064° 59' W
- 42° 39' N 065° 31' W
- 42° 52' N 066° 05' W

## **BAY OF FUNDY – VOLUNTARY SLOWDOWN**

The Grand Manan Basin located in the Bay of Fundy is identified as a critical habitat for the North Atlantic right whale. When North Atlantic right whales are detected in the Bay of Fundy shipping lanes and near the Grand Manan Basin area, the Fundy Traffic will ask participating vessels to voluntarily slowdown to 10 knots via VHF channel 12 or 14 at corresponding Calling-in-Points.

## **NAVWARN BROADCASTS**

The Canadian Coast Guard issues NAVWARNs:

- by radio broadcast; and
- online at [Canada's Maritime Information Portal](#) and its [Navigational Warnings](#) site, using the [North Atlantic Right Whale](#) category.

Mariners must ensure they have accurate and up-to-date information about the protection of the North Atlantic right whale, as in all applicable NOTMARs and NAVWARNs.

For the North Atlantic right whale speed restrictions, the NAVWARN(s) currently in effect will be provided to vessels subject to the *Vessel Traffic Services Zone Regulations* or the *Eastern Canada Vessel Traffic Services Zone Regulations*:

### **Outbound vessels will receive NAVWARNs**

- at Calling-in-Point 10 (St-Laurent); or
- upon a departure downstream from the Quebec pilot station (including the Saguenay River, Chaleur Bay, Miramichi Bay, etc.)

### **Inbound vessels will receive NAVWARNs**

- when a clearance to enter Canadian waters is granted

### **Vessels in transit will receive NAVWARNs**

- at the last reporting point prior to entering the mandatory speed restriction zones; and/or
- at 10 nautical miles before they enter the mandatory speed restriction zones

For those vessels not subject to the above-mentioned regulations, vessel operators are required to monitor broadcasts by the Canadian Coast Guard's Marine Communications and Traffic Services network for the most up to date information. For marine radio frequencies and broadcast times, information may be found in the [Radio Aids to Marine Navigation](#) publication.

## **AIDS TO NAVIGATION**

The Canadian Coast Guard broadcasts virtual Automatic Identification System (AIS) aids to navigation (AIS AtoN) in specific areas. These aids may notify mariners of dynamic shipping zones and/or seasonal management areas subject to speed restrictions.

Each zone is delimited by four to six virtual AIS AtoN, which can be displayed on a ship's navigation equipment, such as

- Electronic Chart Display and Information System (ECDIS);
- Electronic Chart System (ECS);
- RADAR;
- Minimum Keyboard Display (MKD); and
- Electronic Nautical Chart (ENC).



The Canadian Coast Guard broadcasts the virtual AIS AtoN only when a speed restriction is in effect in one or more testing zones.

Mariners must select the virtual AIS AtoN symbol to view a message such as “SectA1 Spd Lim 10 kt.” This message refers to a speed restriction in effect for a specific zone.

Note: This system is not the primary method of communicating this information.

## COMPLIANCE AND ENFORCEMENT

Vessels must comply with the Interim Orders made pursuant to the *Canada Shipping Act, 2001*, and any NAVWARNs broadcasted and published by the Canadian Coast Guard relating to the Interim Orders, aimed at regulating the navigation for the purposes of protecting the North Atlantic right whales.

If a vessel does not comply with the Interim Orders or instructions in the NAVWARNs related to the Interim Orders, the vessel could face:

- administrative monetary penalties up to a maximum of CAN \$250,000; and/or
- penal sanctions under the *Canada Shipping Act, 2001* is liable on summary conviction to a fine of not more than CAN \$1,000,000 or to imprisonment for a term of not more than 18 months, or to both.

If a vessel appears to have violated the speed restriction, Transport Canada Marine Safety inspectors will review all information provided through AIS and seek an explanation from the master.

No exemptions to the speed restriction will be granted in advance. However, if a deviation from the speed restrictions is necessary for safety reasons, the following information must be entered into the bridge logbook:

- reason(s) for deviation;
- speed at which vessel is operated;
- latitude and longitude at time of deviation;
- time and duration of deviation; and
- master of the vessel shall sign and date the bridge logbook entry.

For any deviation, Transport Canada will review and consider reasons such as:

- navigating to ensure vessel safety;
- weather conditions;
- force majeure (unforeseeable circumstances); and
- responding to emergencies.

## REPORT A NORTH ATLANTIC RIGHT WHALE SIGHTING

If you see **live, free-swimming whales**:

- Email: [DFO.GLFWhales-BaleinesGLF.MPO@dfo-mpo.gc.ca](mailto:DFO.GLFWhales-BaleinesGLF.MPO@dfo-mpo.gc.ca)
- When reporting sightings of North Atlantic right whales, you must include: GPS location (latitude and longitude), date and time of sighting, number of marine mammals, **photograph(s)/video(s) collected** and if possible, behavior of marine mammals observed (ex., feeding, travelling, diving).

If you see a North Atlantic right whale (and all other marine mammals) **entangled, injured or dead**, please document and report it immediately to the regional Response Network.

- When documenting you should collect: GPS location (latitude and longitude), date and time of sighting, number of marine mammals, photograph(s)/video(s), and description of the incident to provide to the Response Network.

**Southern part of the Gulf of St. Lawrence (New Brunswick, Nova Scotia & Prince Edward Island)**

Marine Animal Response Society  
Telephone: 1-866-567-6277

**Newfoundland and Labrador**

Whale Release and Strandings Newfoundland and Labrador (Tangly Whales Inc.)  
Telephone: 1-888-895-3003 or 1-709-895-3003

**Quebec**

Baleines en direct (GREMM)  
Telephone: 1-877-722-5346

**Report a marine mammal or sea turtle incident or sighting:**

For more information on reporting other marine mammal or sea turtle sighting and incidents:  
<https://www.dfo-mpo.gc.ca/species-especes/mammals-mammiferes/report-rapport/page01-eng.html>

**Please consult Whale Insight for the latest right whale observations:**

<https://gisp.dfo-mpo.gc.ca/apps/WhaleInsight/eng/?locale=en>

**\*402/25 Canadian Hydrographic Service – Electronic Navigational Charts**

S-57 ENC Number	Chart Title	ENC Compilation Scale	Published
<b>New Charts</b>			
CA543PWA (Edn 1.000)	CA543PWA	1:11 000	2025-04-18
CA543PXA (Edn 1.000)	CA543PXA	1:11 000	2025-04-18
CA543PYA (Edn 1.000)	CA543PYA	1:11 000	2025-04-18
CA543Q0A (Edn 1.000)	CA543Q0A	1:11 000	2025-04-18
CA544PXA (Edn 1.000)	CA544PXA	1:11 000	2025-04-18
CA544PYA (Edn 1.000)	CA544PYA	1:11 000	2025-04-18
CA544Q0A (Edn 1.000)	CA544Q0A	1:11 000	2025-04-25
CA55HSGA (Edn 1.000)	CA55HSGA	1:6 000	2025-04-18
CA55HSHA (Edn 1.000)	CA55HSHA	1:6 000	2025-04-18
<b>New Editions</b>			
CA44UNEA (Edn 3.000)	Transit4800N07000W	1:22 500	2025-04-18
CA542MBA (Edn 2.000)	Port4540N07360W	1:6 000	2025-04-25
CA54PRQA (Edn 2.000)	CA54PRQA	1:6 000	2025-04-04
CA54PRRA (Edn 2.000)	CA54PRRA	1:6 000	2025-04-04
CA570277 (Edn 7.000)	Gold River	1:5 000	2025-04-18

**\*403/25 Canadian Hydrographic Service – Raster Digital Charts (BSB V3)**

Charts	Main Title	Scale	Edition Date	Published
<b>Charts Permanently Withdrawn</b>				
RM-2058	Cobourg to/à Oshawa			
RM-2059	Scotch Bonnet Island to/à Cobourg			
RM-2221	Midland Harbour			
RM-2225	Approaches to/Approches à Parry Sound			
RM-2244	Alexander Passage to/à Beaverstone Bay			
RM-2299	Clapperton Island to/à Meldrum Bay			
RM-2301	Passage Island to/à Thunder Bay			
RM-2303	Jackfish Bay to/à St. Ignace Island			
RM-2304	Oiseau Bay to/à Jackfish Bay			
RM-2308	Michipicoten Island to/à Oiseau Bay			
RM-2310	Caribou Island to/à Michipicoten Island			
RM-2312	Nipigon Bay and Approaches/et les approches			
RM-2318	Heron Bay			
RM-2326	Middlebrun Bay to/à Washington Island			
RM-4337	Alma (and Approaches / et les Approaches)			
RM-4505	Plans - East Coast of the Island of Newfoundland/Côte Est de l'Île de Terre Neuve			
RM-5335	Rivière George			
RM-5338	Rivière Koksoak			
RM-5374	Beacon Island à/to Qikirtaaluk Islands			
RM-5375	Qikirtaaluk Islands à/to Point Qirniraujaq			
RM-5376	Approches à/Approaches to Rivière Koksoak			
RM-5429	Plans du Déroit D'Hudson/Plans of Hudson Strait			
RM-5457	Deception Bay			
RM-5458	Sugluk Inlet			
RM-5471	Inukjuak et les Approches and Approaches			
RM-5510	Puvirnituq et les approches / and Approches			
RM-5621	Rockhouse Island to/à Centre Island			
RM-5622	Centre Island to/à Farther Hope Point			
RM-5623	Farther Hope Point to/à Terror Point			
RM-5624	Terror Point to/à Schooner Harbour			
RM-5625	Schooner Harbour to/à Baker Lake			
RM-5626	Baker Lake			
RM-5640	Churchill Harbour			
RM-7121	Cape Mills to/à Cape Rammelsberg			
RM-7122	Culbertson Island to/à Koojesse Inlet			
RM-7184	Broughton Island and Approaches/et les Approches			
RM-7195	Kangok Fiord and Approaches/et les Approches			

Charts	Main Title	Scale	Edition Date	Published
RM-7212	Bylot Island and Adjacent Channels / et Chenaux Adjacent			
RM-7371	Alexandra Fiord			
RM-7485	Parry Bay to/au Navy Channel			
RM-7487	Fury and Hecla Strait			
RM-7511	Resolute Passage			
RM-7513	Milne Inlet, Southern Portion / Partie Sud			
RM-7527	Erebus and Terror Bay and/et Radstock Bay			
RM-7552	Bellot Strait and Approaches/et Les Approches			
RM-7571	Viscount Melville Sound			
RM-7572	Viscount Melville Sound and/et M'clure Strait			
RM-7575	Peel Sound and/et Prince Regent Inlet			
RM-7578	Pelly Bay			
RM-7646	Putulik (Hat Island) and/et Wilkins Point			
RM-7661	Demarcation Bay to/à Philips Bay			
RM-7685	Tuktoyaktuk Harbour and Approaches/et les approches			
RM-7710	Lambert Channel and/et Cache Point Channel			
RM-7736	Simpson Strait			
RM-7737	Storis Passage to/à Requisite Channel			
RM-7738	Simpson Strait to/à Storis Passage			
RM-7739	James Ross Strait			
RM-7750	Approaches to/Approches à Cambridge Bay			
RM-7770	Spence Bay and Approaches/et les Approches			
RM-7776	Dolphin and Union Strait			
RM-7777	Coronation Gulf Western Portion/Partie Ouest			
RM-7782	Queen Maud Gulf Western Portion/Partie Ouest			
RM-7784	Victoria Strait			
RM-7787	St. Roch and/et Rasmussen Basins			
RM-7920	Tanquary, Slidre and Glacier Fiords			
RM-7935	Crozier Strait and/et Pullen Strait			

#### **\*404/25 Transport Canada - Ship Safety Bulletin #04/2025**

A new **Ship Safety Bulletin** has recently been posted on the [Transport Canada website](#).

To view or download this bulletin, please click on the link below:

**[SSB#04/2025](#) – Protecting the North Atlantic right whale: speed restriction measures in the Gulf of St. Lawrence**  
**RDIMS# 18265176**

Sign up for [e-Bulletin](#) to receive an e-mail notice each time a new Ship Safety Bulletin is published on our website.

**Contact us at** [marinesafety-securitemaritime@tc.gc.ca](mailto:marinesafety-securitemaritime@tc.gc.ca) or 1-855-859-3123 (Toll Free).

**\*405/25 Saguenay–St. Lawrence Marine Park - Beluga Whale Protection: Slowdown Area at the Mouth of the Saguenay Fjord and Area Closure at Baie Sainte-Marguerite**

The Saguenay–St. Lawrence Marine Park and its surrounding area are at the heart of endangered beluga whale critical summer habitat. Marine mammal protection measures have been put in place in accordance with the *Marine Activities in the Saguenay–St. Lawrence Marine Park Regulations* within the limits of the Marine Park.

However, important feeding, calving and rearing areas for beluga whales require greater protection to ensure the recovery of the species. The portion of the Saguenay situated between the mouth of the Fjord and Baie Sainte-Marguerite is one of the areas most used by females and their young from May to October. The mouth of the Saguenay is known as a feeding ground and Baie Sainte-Marguerite as a calving and rearing area.

In order to prevent collisions with beluga whales, a compulsory 15-knot slowdown area is in effect from May 1st to October 31st at the mouth of the Saguenay. To ensure tranquility for female belugas and their young during the critical calving period, access to Baie Sainte-Marguerite is prohibited to all vessels from June 21st to September 21st, except for special authorizations (see description below).

For safety reasons, the slowdown area measure at the mouth of the Saguenay Fjord does not apply to cargo ships (see the monthly edition of Notice to Mariners from May to October for voluntary protection measures in the St. Lawrence Estuary). An enhanced vigilance is, however, recommended to all navigators between the mouth of the Saguenay Fjord and Baie Sainte-Marguerite for the protection of beluga whales.

For more information on the Saguenay–St. Lawrence Marine Park, see notice 5C of the *Notices to Mariners Annual Edition 2025* or visit the [Saguenay-St. Lawrence Marine Park website](#).

**REGULATORY PROTECTION MEASURES — BELUGA WHALE**

**Entire Marine Park Territory:**

- When beluga whales are less than half a nautical mile (926 metres) from a motorized vessel, the vessel must maintain a steady speed of between 5 and 10 knots.
- All vessels, including human-powered vessels (kayaks and canoes), must continue to move forward and maintain their heading.
- All vessels must maintain a minimum distance of 400 metres from beluga whales at all times.

For more information concerning the regulations, consult the [“Navigate” section of the Saguenay-St. Lawrence Marine Park website](#).

**Mouth of the Saguenay Fjord (Figure 1) — Slowdown Area (area crosshatched in red):**

- Maximum speed at the mouth of the Saguenay between buoys S7 and S8 and the ferry docks between Baie-Sainte-Catherine and Tadoussac is 15 knots from May 1<sup>st</sup> to October 31<sup>st</sup>.

**Baie Sainte-Marguerite (Figure 2) — Area Closure (red area):**

- From June 21st to September 21st, vessels must not enter the red area, which follows a line between Cap Nord-Ouest and Cap Sainte-Marguerite.
- Special authorizations are granted only for kayaks, canoes and recreational fishermen who must travel without stopping along a corridor within 10 metres of the shore or in shallow areas.

## VOLUNTARY PROTECTION MEASURES

### Baie Sainte-Marguerite sector (Figure 2) — Transit Area (area crosshatched in yellow):

- From June 21st to September 21st, navigation in this area is recommended at a speed of between 5 and 10 knots without stopping.

The purpose of this transit area is to favour respect of the *Marine Activities in the Saguenay–St. Lawrence Marine Park Regulations*, since beluga whales are often present in the Baie Sainte-Marguerite sector.

### Information

All incidents, including collisions with whales, must be reported without delay by calling 1-866-508-9888. For any other situation concerning a marine mammal that is either dead or in trouble, contact the Marine Mammal Emergency Response Network at 1-877-722-5346, or use VHF channel 16.

Figure 1

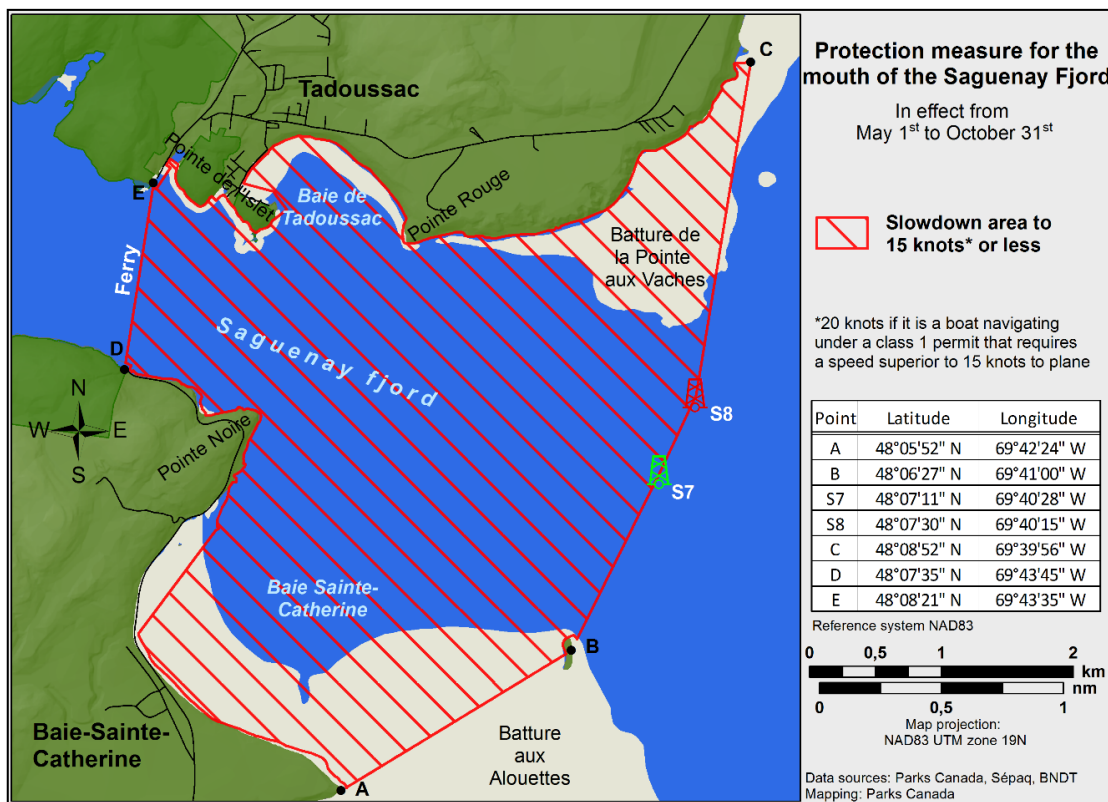
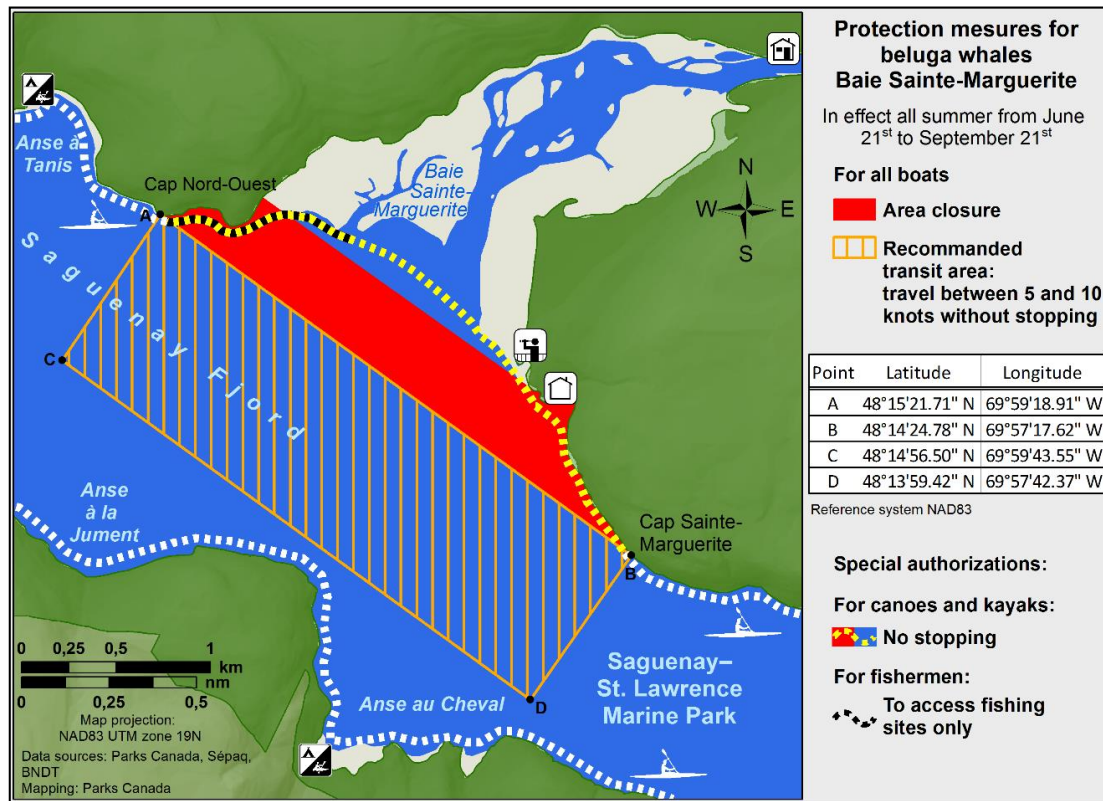




Figure 2



#### \*406/25 Saguenay–St. Lawrence Marine Park and Surrounding Waters – Whale Protection

The waters in and around the Saguenay–St. Lawrence Marine Park are well known for the resident endangered beluga population and the wide diversity of whales that migrate there to feed, particularly between April and November.

#### REGULATORY PROTECTION MEASURES

All whale species that are found in the St. Lawrence are protected under the *Marine Mammal Regulations*, pursuant to the *Fisheries Act*. Within the boundaries of the Marine Park, specific measures are set out in the *Marine Activities in the Saguenay–St. Lawrence Marine Park Regulations*, pursuant to the establishment of the *Saguenay–St. Lawrence Marine Park Act*. Any collision with a marine mammal within the Marine Park must immediately be reported to a park warden at 1-866-508-9888. For collisions that occur outside the Marine Park or for any situation involving a marine mammal that is dead or in trouble, contact the emergency network at 1-877-722-5346 or on VHF channel 16.

For more information on the Saguenay–St. Lawrence Marine Park, see notice 5C of the *Notices to Mariners Annual Edition 2025*.

#### VOLUNTARY PROTECTION MEASURES

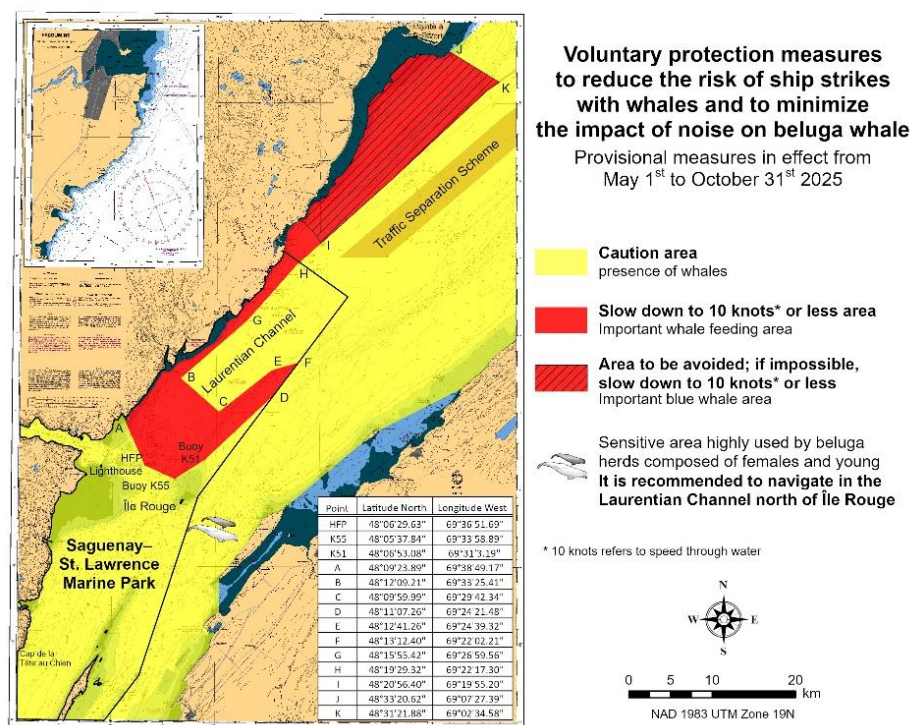
Provisional measures in effect from May 1 to October 31, 2025. See map at the end of this notice.

These measures apply to merchant vessels and cruise ships between Pointe à Boisvert and Cap de la Tête au Chien to prevent collisions with whales. These measures should only be taken when they will not jeopardize navigational safety.

**Caution area (yellow area):** To reduce the risk of collisions with whales that can be present anywhere in this area, heightened vigilance of navigators is critical. Posting a lookout is recommended in order to increase the chances of seeing the whales and thus taking necessary measures to avoid them. If bypassing the whales is not possible, slow down and wait for the animals to move away to a distance greater than 400 metres (0.215 nautical miles) before resuming original speed. It is more difficult to see the animals at night therefore increased caution is recommended.

**Slow down to 10 knots or less area (red area):** To reduce the risk of collisions with whales in this feeding area, it is recommended that vessels slow down to a maximum speed through the water of 10 knots and post a lookout. It is further recommended to remain in the Laurentian Channel to the north of Île Rouge to minimize the impact of noise in a sensitive area south of this island, which is highly frequented by herds of beluga whales composed of females and young.

**Area to be avoided (hatched red area):** To reduce noise and the risk of collisions with whales, vessels should avoid transiting through this area which is highly frequented by blue whales, an endangered species. If the area cannot be avoided, slow down to a speed through the water of 10 knots or less.



#### \*407/25 Lac Saint-Pierre – Unlit Buoys Permanently Discontinued

Reference chart: 1312

The following unlit buoys have been permanently discontinued:

Aid Name	LL #	Position
Buoy SH19	7147.6	46° 12' 47.9"N 072° 55' 09.9"W
Louiseville buoy SH5	7147.61	46° 11' 56.8"N 072° 54' 34.8"W
Buoy SH13	7147.62	46° 12' 26.6"N 072° 54' 55.1"W
Buoy SH17	7147.63	46° 12' 39.5"N 072° 55' 04.2"W

(Q2025-032 to 035)



**\*408/25 Taylors Head to / à Shut-in Island – Unlit Buoy Replaced by a Lighted Buoy**

Reference chart: 4236

The following unlit buoy has been permanently changed to the following:

Aid Name	LL #	Position	Changes
East Chezzetcook buoy HJ4	5564.03	44° 41' 18.8"N 063° 13' 47.7"W	Unlit buoy discontinued.
East Chezzetcook light buoy HJ4	564.03	44° 41' 18.8"N 063° 13' 47.7"W	Lighted spar buoy equipped with a red lantern with flash characteristics: Fl 0.3 s; Ec 0.7 s permanently established.

(F2025-003)

**\*409/25 Demarcation Bay to/à Philips Bay – Unlit Buoy Permanently Discontinued**

Reference chart: 7661

The following unlit buoy has been permanently discontinued:

Aid Name	LL #	Position
Workboat Passage NTCL #1	4700.6	69° 34' 09.6"N 139° 15' 35.4"W

(A2025-034)

## Section 1A: Temporary and Preliminary Notices

### Reminder – Comment Period for Active Preliminary Notices

This is a reminder that the comment period is still open for the following active Preliminary notices:

Notice #	Reference Chart #	Aids Affected (LL #)	Intent of Notice
<b>Atlantic Coast</b>			
<a href="#">208(P)/25</a>	1223	1748	Aid to Navigation to be Abandoned
<a href="#">209(P)/25</a>	4025	1513.2	Aid to Navigation to be Abandoned
<a href="#">312(P)/25</a>	4116	List	Notice of Proposed Changes

Please refer to the [Notices to Mariners - Monthly Summary of Temporary and Preliminary Notices](#) publication for details.

### Newfoundland and Labrador Coast

#### Temporary Notices

No notices applicable for this edition.

#### Preliminary Notices

No notices applicable for this edition.

### Atlantic Coast

#### Temporary Notices

#### \*410(T)/25 Chenal du Havre de la Grande Entrée – Waterway Information: Wharf Closed

Reference chart: 4954

Wharf 406 of Grande-Entrée is closed. Pollution containment booms in place.

Stay clear. Minimum wake.

(NW-C-2172-24)

#### \*411/25 Cap Éternité à/to Saint Fulgence – Obstruction Charted

Reference: Notice 721(T)/24 is cancelled (Chart 1202).

Anchor has been charted on chart 1202.

**\*412/25 Baie des Sept-Îles – Obstruction Charted**

Reference: Notice 722(T)/24 is cancelled (Chart 1220).

Anchor and chain have been charted on chart 1220.

**\*413/25 Mouillages et Installations Portuaires/Anchorages and Harbour Installations - Haute Côte-Nord – Obstruction Charted**

Reference: Notice 723(T)/24 is cancelled (Chart 1226).

Anchor has been charted on chart 1226.

**\*414/25 Mouillages et Installations Portuaires/Anchorages and Harbour Installations - Haute Côte-Nord – Obstruction Charted**

Reference: Notice 309(T)/24 is cancelled (Chart 1226).

Anchors have been charted on chart 1226.

**Preliminary Notices**

**Atlantic Region**

Comment Submission

Comments on proposed changes in preliminary (P) notices are solicited from mariners and other interested parties within three months of the initial publication date. Following this date, the notices will be cancelled. Any objections raised must state the facts on which they are based and should include supporting information on safety, commerce and public benefit.

Comments should be directed to the following:

Superintendent,  
Aids to Navigation & Waterways  
Canadian Coast Guard, Atlantic Region  
P.O. Box 1000  
50 Discovery Drive  
Dartmouth, NS B2Y 3Z8  
Telephone: (506) 636-4708  
Email: [DFO.CCGATLaidstoNavDiscont-AidesalanavSupprATLGCC.MPO@dfo-mpo.gc.ca](mailto:DFO.CCGATLaidstoNavDiscont-AidesalanavSupprATLGCC.MPO@dfo-mpo.gc.ca)

**\*415(P)/25 Red Point to / à Guyon Island – Notice of Proposed Changes**

Reference chart: 4374

The Canadian Coast Guard proposes to permanently change the following aids to navigation:

Aid Name	LL #	Position	Proposed Changes
<b>Floating Aids</b>			
Fourchu light and whistle buoy N14	745	45° 42' 00.2"N 060° 12' 45.6"W	Discontinue the whistle. Reduce the size of the buoy. Increase lantern intensity.
Fourchu light and bell buoy NC2	746	45° 42' 57.2"N 060° 13' 07.6"W	Discontinue the bell. Reduce the size of the buoy.

Initial publication date: Friday, April 25, 2025

[Comment submission deadline](#): Thursday, July 24, 2025

(G2025-027)

**\*416(P)/25 Chéticamp to / à Cape St. Lawrence – Light Buoy to be Discontinued**

Reference chart: 4464

The Canadian Coast Guard proposes to permanently discontinue the following aid to navigation:

Aid Name	LL #	Position
Pleasant Bay light and bell buoy VC	860.5	46° 50' 30.1"N 060° 48' 17.6"W

Initial publication date: Friday, April 25, 2025

[Comment submission deadline](#): Thursday, July 24, 2025

(G2025-026)

**Central Region: St. Lawrence Sector**

Comment Submission

Comments on proposed changes in preliminary (P) notices are solicited from mariners and other interested parties within three months of the initial publication date. Following this date, the notices will be cancelled. Any objections raised must state the facts on which they are based and should include supporting information on safety, commerce and public benefit.

Comments should be directed to the following:

Superintendent  
Aids to Navigation & Waterways  
Canadian Coast Guard, Central Region  
1550 D'Estimauville Avenue  
Québec, QC G1J 5E9  
Telephone: (418) 648-7450  
Emails:  
St. Lawrence Region: [DFO.AtoNStLawrence-StLaurentAalaN.MPO@dfo-mpo.gc.ca](mailto:DFO.AtoNStLawrence-StLaurentAalaN.MPO@dfo-mpo.gc.ca)  
Great Lakes Region:  
[DFO.CCGCentralAtoNGreatLakes-GrandsLacsAalaNCentreGCC.MPO@dfo-mpo.gc.ca](mailto:DFO.CCGCentralAtoNGreatLakes-GrandsLacsAalaNCentreGCC.MPO@dfo-mpo.gc.ca)

**\*417(P)/25 Cap de la Tête au Chien au/to Cap aux Oies – Aid to Navigation to be Abandoned**

Reference chart: 1234

The Canadian Coast Guard proposes to permanently abandon the following aid to navigation:

Aid Name	LL #	Position
Îles du Pot à l'Eau-de-Vie	1827	47° 52' 20.5"N 069° 40' 52.7"W

The structure will remain.

Initial publication date: Friday, April 25, 2025

[Comment submission deadline](#): Thursday, July 24, 2025

(Q2025-037)

## Inland Waters

### Temporary Notices

#### **\*418(T)/25 Arctic Archipelago / Archipel de l'Arctique – Obstruction – Subsurface Moorings**

Reference chart: 7000

Scientific subsurface moorings at the following coordinates:

Moorings A:	71° 37.87' N 157° 19.58'W	Top float 65 metres.
Moorings B:	71° 25.33'N 152° 44.10'W	Top float 77 metres.
Moorings C:	70° 50.09'N 146° 23.56'W	Top float 58 metres.
Moorings BGOS-A	75° 00.01'N 150° 00.00'W	Top float 30 metres. Depth of 3826 metres.
Moorings BGOS-D	73° 59.64'N 139° 58.95'W	Top float 30 metres. Depth of 3504 metres.
Moorings BGOS-B	77° 59.99'N 150° 00.00'W	Top float 30 metres. Depth of 3824 metres.

(NAVAREA XVII 77/2016, 4/2022)

#### **\*419(T)/25 Paallavvik to/à Kangiqtugaapik – Obstruction – Scientific Mooring**

Reference chart: 7053

Scientific subsurface mooring at position 69° 54.66' N 066° 48.42'W. Top float 221 metres.

(NAVAREA XVIII 56/2021)

#### **\*420(T)/25 Clyde Inlet to/à Cape Jameson – Obstruction – Subsurface Mooring**

Reference chart: 7565

Scientific subsurface mooring at position 71° 08.07' N 070° 49.51'W. Top float 248 metres.

(NAVAREA XVIII 113/2022)

#### **\*421(T)/25 Franklin Bay and/et Darnley Bay – Obstruction – Subsurface Mooring**

Reference chart: 7665

Scientific subsurface mooring at position 70° 02.434' N 126° 18.404'W. Top float 223 metres.

(NAVAREA XVII 92/2019)

**\*422(T)/25 Prince Albert Sound, Western Portion/ Partie Ouest – Obstruction – Subsurface Mooring**

Reference chart: 7668

Subsurface mooring at position 70° 42.59' N 117° 51.21' W. Top float 37 metres.

(NAVAREA XVIII 112/2021)

**\*423(T)/25 Approaches to/Approches à Cambridge Bay – Obstruction – Subsurface Buoy and Apparatus**

Reference chart: 7750

Oceanographic observatory installed. Cable on the sea floor at 69° 06.83' N 105° 03.58' W extends at a depth of 8 metres to an instrument platform at 69° 06.79' N 105° 03.86' W, then to a secondary hydrophone platform at 69° 06.75' N 105° 03.88' W, at a depth of 13 metres. The cable extends at a depth of 8 metres from the primary instrument platform to a secondary instrument tripod at 69° 06.78' N 105° 03.83' W. A rope with floats and weights extends approximately 42 metres southeast of the secondary hydrophone platform to an end point at 69° 06.73' N 105° 03.86' W.

**Preliminary Notices**

**Arctic Region**

Comment Submission

Comments on proposed changes in preliminary (P) notices are solicited from mariners and other interested parties within three months of the initial publication date. Following this date, the notices will be cancelled. Any objections raised must state the facts on which they are based and should include supporting information on safety, commerce and public benefit.

Comments should be directed to the following:

Superintendent,  
Aids to Navigation & Waterways  
Canadian Coast Guard, Arctic Region  
5120 49th Street  
Yellowknife NT. X1A 1P8  
Telephone: (867) 444-0109  
Email: [DFO.CCGArcticAidstoNavigation-AidesalanavigationArctiqueGCC.MPO@dfo-mpo.gc.ca](mailto:DFO.CCGArcticAidstoNavigation-AidesalanavigationArctiqueGCC.MPO@dfo-mpo.gc.ca)

**\*424(P)/25 Puvirnituk et les approches / and Approches – Racon to be Discontinued**

Reference chart: 5510

The Canadian Coast Guard proposes to permanently discontinue the following racon:

Aid Name	LL #	Position
Puvirnituk Racon	6447.24	60° 01' 15.5"N 077° 20' 21.3"W

The structure will remain.

Initial publication date: Friday, April 25, 2025

[Comment submission deadline](#): Thursday, July 24, 2025

(A2025-038)

## Section 2: Chart Corrections

### 1201 - Saint-Fulgence à/to Saguenay - New Chart - 07-FEB-2014 - NAD 1983

18-APR-2025

LNMD. 10-NOV-2023

Add MARINE REFUGE No human activities that are incompatible with the conservation of the ecological components of interest may occur or be foreseeable within the area.

48°25'03.0"N 070°57'00.0"W

*DFO(6411243-06)*

### 1202 - Baie des Ha! Ha! - New Edition - 23-OCT-2020 - NAD 1983

18-APR-2025

LNMD. 13-DEC-2024

Add foul ground  
(See Chart 1, K31)

48°20'00.0"N 070°51'48.6"W

*DFO(6411271-01)*

### 1202 - Cap à l'Est à St-Fulgence - Continuation A - New Edition - 23-OCT-2020 - NAD 1983

18-APR-2025

LNMD. 13-DEC-2024

Add environmentally sensitive sea area with legend MR  
(See Chart 1, N22)

between 48°22'32.3"N 070°42'20.5"W  
and 48°20'56.2"N 070°41'41.8"W

*DFO(6411243-01)*

Add Voir/See note REFUGE MARIN / MARINE REFUGE

48°23'01.0"N 070°43'50.0"W

*DFO(6411243-02)*

Add foul ground  
(See Chart 1, K31)

48°20'00.0"N 070°51'48.6"W

*DFO(6411271-01)*

### 1202 - Cap Éternité à Cap à l'Est - New Edition - 23-OCT-2020 - NAD 1983

18-APR-2025

LNMD. 13-DEC-2024

Add environmentally sensitive sea area with legend MR  
(See Chart 1, N22)

between 48°22'32.3"N 070°42'20.5"W  
and 48°20'56.2"N 070°41'41.8"W

*DFO(6411243-01)*

Add MARINE REFUGE No human activities that are incompatible with the conservation of the ecological components of interest may occur or be foreseeable within the area.

48°23'34.0"N 070°40'34.0"W

*DFO(6411243-03)*

Add Voir/See note REFUGE MARIN / MARINE REFUGE

48°21'53.0"N 070°42'36.0"W

*DFO(6411243-05)*

### 1220 - Baie des Sept-Îles - New Edition - 24-MAR-2021 - NAD 1983

11-APR-2025

LNMD. 23-FEB-2024

Add foul ground  
(See Chart 1, K31)

50°11'04.8"N 066°28'01.8"W

*DFO(6411272-01)*

### 1223 - Chenal du Bic et les approches/and approaches - New Edition - 21-MAR-2008 - NAD 1983

04-APR-2025

LNMD. 11-OCT-2024

Add depth of 10 metres  
(See Chart 1, I10)

48°24'12.1"N 068°44'09.1"W

*DFO(6411234-01)*

Add	depth of 14,2 metres (See Chart 1, I10)	48°23'12.9"N 068°47'21.8"W
		<i>DFO(6411234-02)</i>

**1226 - Baie-Comeau - New Edition - 12-JAN-2024 - NAD 1983**

04-APR-2025

LNMD. 27-DEC-2024

Add	foul ground (See Chart 1, K31)	49°14'42.0"N 068°06'00.0"W
		<i>DFO(6411267-04)</i>

Add	depth of 8,8 metres (See Chart 1, I10)	49°13'03.0"N 068°06'13.8"W
		<i>DFO(6411270-01)</i>

Add	depth of 4,5 metres (See Chart 1, I10)	49°13'02.4"N 068°06'15.4"W
		<i>DFO(6411270-03)</i>

Add	depth of 2 metres (See Chart 1, I10)	49°12'59.9"N 068°06'14.1"W
		<i>DFO(6411270-04)</i>

Add	depth of 4,5 metres (See Chart 1, I10)	49°13'00.1"N 068°06'12.1"W
		<i>DFO(6411270-05)</i>

**1226 - Port-Cartier - New Edition - 12-JAN-2024 - NAD 1983**

04-APR-2025

LNMD. 27-DEC-2024

Add	foul ground (See Chart 1, K31)	49°59'53.4"N 066°48'45.0"W
		<i>DFO(6411267-01)</i>

Add	foul ground (See Chart 1, K31)	50°00'04.3"N 066°48'38.4"W
		<i>DFO(6411267-02)</i>

Add	foul ground (See Chart 1, K31)	50°00'55.2"N 066°46'06.0"W
		<i>DFO(6411267-03)</i>

**1236 - Pointe des Monts aux/to Escoumins - New Edition - 26-OCT-2012 - NAD 1983**

04-APR-2025

LNMD. 21-MAR-2025

Delete	depth of 0,9 metres (See Chart 1, I10)	49°05'45.3"N 068°08'18.5"W
		<i>DFO(6411270-06)</i>

Add	drying height of 0,5 metres (See Chart 1, I15)	49°05'37.1"N 068°08'27.4"W
		<i>DFO(6411270-07)</i>

Delete	depth of 1,6 metres (See Chart 1, I10)	49°03'47.5"N 068°15'30.4"W
		<i>DFO(6411270-08)</i>

Add	depth of 0,5 metres (See Chart 1, I10)	49°03'47.6"N 068°15'29.4"W
		<i>DFO(6411270-09)</i>



**1320 - Port de Gros-Cacouna - New Chart - 26-AUG-2011 - NAD 1983**

04-APR-2025

LNMD. 10-JAN-2025

Delete	depth of 8,1 metres (See Chart 1, I10)	47°55'38.3"N 069°30'50.5"W <i>DFO(6411266-01)</i>
Add	depth of 7,8 metres (See Chart 1, I10)	47°55'38.1"N 069°30'50.6"W <i>DFO(6411266-02)</i>
Add	depth of 6,7 metres (See Chart 1, I10)	47°55'40.0"N 069°31'18.0"W <i>DFO(6411266-03)</i>
Delete	depth of 7,3 metres (See Chart 1, I10)	47°56'07.3"N 069°31'05.3"W <i>DFO(6411266-08)</i>
Add	depth of 7 metres (See Chart 1, I10)	47°56'07.3"N 069°31'05.2"W <i>DFO(6411266-09)</i>

**1320 - Île du Bic au/to Cap de la Tête au Chien - New Chart - 26-AUG-2011 - NAD 1983**

04-APR-2025

LNMD. 10-JAN-2025

Add	depth of 10 metres (See Chart 1, I10)	48°24'12.1"N 068°44'09.1"W <i>DFO(6411234-01)</i>
Add	depth of 14,2 metres (See Chart 1, I10)	48°23'12.9"N 068°47'21.8"W <i>DFO(6411234-02)</i>

**1509 - Rapides du Cheval Blanc - Sheet/Feuille 1 - New Edition - 15-NOV-2019 - NAD 1983**

25-APR-2025

LNMD. 08-NOV-2024

Affix	patch Download Patch - <a href="https://www.notmar.gc.ca/chsftp/patches/1509_6411273_1_202503271256.pdf">https://www.notmar.gc.ca/chsftp/patches/1509_6411273_1_202503271256.pdf</a>	45°31'05.1"N 073°50'02.8"W <i>DFO(6411273-01)</i>
Add	See CAUTION No. 3	45°30'50.9"N 073°51'35.1"W <i>DFO(6411273-06)</i>

**1509 - Île Bizard à/to Pont-Viau A-B - Sheet/Feuille 1 - New Edition - 15-NOV-2019 - NAD 1983**

25-APR-2025

LNMD. 08-NOV-2024

Delete	CAUTION No. 2 Due to the very strong currents and the narrow channel, the Rapides du Cheval Blanc are considered dangerous to navigation. It is recommended to small crafts not to meet when proceeding in these rapids. Small crafts heading downstream have priority.	45°30'04.1"N 073°53'09.7"W <i>DFO(6411273-02)</i>
Add	CAUTION No. 2 Due to the narrowness of the channel, extremely strong currents, and insufficient water depths, the Rapides du Cheval Blanc are considered dangerous for navigation and, therefore, are not marked.	45°30'04.1"N 073°53'09.7"W <i>DFO(6411273-03)</i>
Affix	patch Download Patch - <a href="https://www.notmar.gc.ca/chsftp/patches/1509_6411273_4_202503271256.pdf">https://www.notmar.gc.ca/chsftp/patches/1509_6411273_4_202503271256.pdf</a>	45°31'06.1"N 073°50'03.9"W <i>DFO(6411273-04)</i>

**4013 - Halifax to / à Sydney - New Edition - 06-SEP-2002 - NAD 1983**

25-APR-2025

LN/D. 11-OCT-2024

Delete red and white fairway lighted pillar whistle buoy Mo(A)  
(See Chart 1, Qd)

45°09'24.5"N 061°07'35.8"W

(G2025003) LL(660) DFO(6311911-01)

**4023 - Northumberland Strait / Détroit de Northumberland - New Edition - 27-DEC-2002 - World Geodetic System 1984**

04-APR-2025

LN/D. 07-MAR-2025

Amend 2 Lts FI R to read FI R & LFI R against light  
(See Chart 1, P10.5, P16)

46°11'54.1"N 064°09'42.6"W

(G2024546) LL(1099.5) DFO(6311857-01)

**4024 - Baie des Chaleurs/Chaleur Bay aux/to Îles de la Madeleine - New Edition - 06-MAR-2015 - NAD 1983**

25-APR-2025

LN/D. 27-SEP-2024

Delete depth of 4,9 metres  
(See Chart 1, I10)

48°07'56.5"N 065°52'36.7"W

DFO(6411265-01)

Add fish haven  
(See Chart 1, K46.1)

48°07'57.8"N 065°52'25.4"W

DFO(6411265-02)

**4117 - Saint John Harbour and Approaches / et les approches - New Edition - 29-MAY-2009 - NAD 1983**

25-APR-2025

LN/D. 29-NOV-2024

Add Spoil Ground / Dépôt de déblais, with legend PA  
(See Chart 1, N62.1, B7)

45°12'31.1"N 066°01'00.3"W

DFO(6311913-01)

Add outfall pipe  
(See Chart 1, L41.1)

between 45°15'44.7"N 066°01'13.8"W  
and 45°15'16.2"N 066°01'43.9"W

DFO(6311913-02)

Add obstruction, depth unknown  
(See Chart 1, K40)

45°13'54.3"N 066°03'26.3"W

DFO(6311913-03)

Add obstruction, depth unknown  
(See Chart 1, K40)

45°14'02.8"N 066°03'10.1"W

DFO(6311913-04)

Add obstruction, depth unknown  
(See Chart 1, K40)

45°13'42.7"N 066°03'02.9"W

DFO(6311913-05)

Add obstruction, depth unknown  
(See Chart 1, K40)

45°13'55.9"N 066°02'48.8"W

DFO(6311913-06)

Add obstruction, depth unknown  
(See Chart 1, K40)

45°13'57.1"N 066°01'40.4"W

DFO(6311913-07)

Add obstruction, depth unknown  
(See Chart 1, K40)

45°13'47.7"N 066°01'26.8"W

DFO(6311913-08)

Add	obstruction, depth unknown (See Chart 1, K40)	45°13'56.1"N 066°01'05.5"W <i>DFO(6311913-09)</i>
Add	obstruction, depth unknown (See Chart 1, K40)	45°13'47.5"N 066°00'49.0"W <i>DFO(6311913-10)</i>
Add	obstruction, depth unknown (See Chart 1, K40)	45°14'00.7"N 066°00'42.1"W <i>DFO(6311913-11)</i>
<b>4227 - Country Harbour to / au Ship Harbour - New Chart - 24-MAY-1991 - NAD 1983</b> 25-APR-2025		LNMD. 21-MAR-2025
Add	depth of 6.4 metres (See Chart 1, I10)	45°05'24.6"N 061°48'33.7"W <i>DFO(6311442-05)</i>
Replace	depth of 17.1 metres with depth of 14.7 metres (See Chart 1, I10)	45°05'02.3"N 061°48'37.6"W <i>DFO(6311442-08)</i>
Replace	depth of 6.4 metres with depth of 3.7 metres (See Chart 1, I10)	45°05'04.0"N 061°47'07.0"W <i>DFO(6311442-16)</i>
<b>4233 - Cape Canso to / à Country Island - New Chart - 11-JAN-1991 - NAD 1983</b> 25-APR-2025		LNMD. 30-AUG-2024
Delete	red and white fairway lighted pillar whistle buoy Mo(A), marked PU (See Chart 1, Qd)	45°09'21.8"N 061°07'27.7"W <i>(G2025003) LL(660) DFO(6311911-01)</i>
<b>4234 - Country Island to / à Barren Island - New Chart - 10-APR-1987 - NAD 1983</b> 25-APR-2025		LNMD. 30-AUG-2024
Add	depth of 4.8 metres (See Chart 1, I10)	45°05'19.3"N 061°49'39.8"W <i>DFO(6311442-01)</i>
Add	depth of 9.5 metres (See Chart 1, I10)	45°05'17.0"N 061°49'27.0"W <i>DFO(6311442-02)</i>
Add	depth of 9.4 metres (See Chart 1, I10)	45°05'32.7"N 061°49'09.2"W <i>DFO(6311442-03)</i>
Add	depth of 8.6 metres (See Chart 1, I10)	45°05'36.1"N 061°48'44.4"W <i>DFO(6311442-04)</i>
Add	depth of 6.4 metres (See Chart 1, I10)	45°05'24.6"N 061°48'33.7"W <i>DFO(6311442-05)</i>
Delete	depth of 17.1 metres (See Chart 1, I10)	45°04'59.0"N 061°48'38.7"W <i>DFO(6311442-06)</i>

Add	depth of 14.7 metres (See Chart 1, I10)	45°05'02.3"N 061°48'37.6"W <i>DFO(6311442-07)</i>
Add	depth of 5.8 metres (See Chart 1, I10)	45°04'43.1"N 061°49'01.3"W <i>DFO(6311442-09)</i>
Add	depth of 5.9 metres (See Chart 1, I10)	45°04'29.1"N 061°49'00.3"W <i>DFO(6311442-10)</i>
Add	depth of 18.7 metres (See Chart 1, I10)	45°04'33.6"N 061°48'14.8"W <i>DFO(6311442-11)</i>
Add	depth of 19.2 metres (See Chart 1, I10)	45°04'39.0"N 061°47'43.8"W <i>DFO(6311442-12)</i>
Add	depth of 8.8 metres (See Chart 1, I10)	45°05'03.9"N 061°48'01.6"W <i>DFO(6311442-13)</i>
Delete	depth of 6.4 metres (See Chart 1, I10)	45°05'01.5"N 061°47'11.5"W <i>DFO(6311442-14)</i>
Add	depth of 3.7 metres (See Chart 1, I10)	45°05'04.0"N 061°47'07.0"W <i>DFO(6311442-15)</i>
Add	depth of 9.4 metres (See Chart 1, I10)	45°04'54.0"N 061°47'22.4"W <i>DFO(6311442-17)</i>
Add	depth of 9.6 metres (See Chart 1, I10)	45°04'48.6"N 061°46'57.0"W <i>DFO(6311442-18)</i>
Replace	depth of 13.4 metres with depth of 11.5 metres (See Chart 1, I10)	45°04'45.2"N 061°47'16.9"W <i>DFO(6311442-19)</i>
Add	depth of 18.9 metres (See Chart 1, I10)	45°04'31.9"N 061°47'18.5"W <i>DFO(6311442-20)</i>
Add	depth of 4.8 metres (See Chart 1, I10)	45°04'57.4"N 061°46'41.1"W <i>DFO(6311442-21)</i>
Add	depth of 6.8 metres (See Chart 1, I10)	45°04'51.2"N 061°46'38.9"W <i>DFO(6311442-22)</i>
Add	depth of 4.8 metres (See Chart 1, I10)	45°04'54.9"N 061°46'22.5"W <i>DFO(6311442-23)</i>

Replace	depth of 8.2 metres with depth of 7.2 metres (See Chart 1, I10)	45°05'09.9"N 061°44'29.5"W <i>DFO(6311442-24)</i>
Add	depth of 9.8 metres (See Chart 1, I10)	45°05'04.3"N 061°44'26.8"W <i>DFO(6311442-25)</i>
Add	depth of 5.9 metres (See Chart 1, I10)	45°05'11.4"N 061°44'13.6"W <i>DFO(6311442-26)</i>
Add	depth of 10.3 metres (See Chart 1, I10)	45°04'48.0"N 061°44'20.4"W <i>DFO(6311442-27)</i>
Add	depth of 8.4 metres (See Chart 1, I10)	45°04'09.1"N 061°44'22.0"W <i>DFO(6311442-28)</i>
Add	depth of 4.7 metres (See Chart 1, I10)	45°04'02.2"N 061°44'26.7"W <i>DFO(6311442-29)</i>
Replace	depth of 20.7 metres with depth of 18.9 metres (See Chart 1, I10)	45°02'41.5"N 061°44'07.5"W <i>DFO(6311442-30)</i>
Replace	depth of 12.8 metres with depth of 11.3 metres (See Chart 1, I10)	45°03'29.4"N 061°43'32.5"W <i>DFO(6311442-31)</i>
Add	depth of 9 metres (See Chart 1, I10)	45°03'13.0"N 061°43'40.1"W <i>DFO(6311442-32)</i>
Add	depth of 9.4 metres (See Chart 1, I10)	45°03'18.7"N 061°43'37.2"W <i>DFO(6311442-33)</i>
Add	depth of 9.6 metres (See Chart 1, I10)	45°03'10.4"N 061°43'27.6"W <i>DFO(6311442-34)</i>
Delete	depth of 18.6 metres (See Chart 1, I10)	45°03'00.6"N 061°44'05.3"W <i>DFO(6311442-35)</i>
Add	depth of 16.6 metres (See Chart 1, I10)	45°03'08.7"N 061°44'08.3"W <i>DFO(6311442-36)</i>
Add	depth of 8.1 metres (See Chart 1, I10)	45°03'08.9"N 061°44'43.0"W <i>DFO(6311442-37)</i>
Add	depth of 10.4 metres (See Chart 1, I10)	45°02'44.3"N 061°44'57.4"W <i>DFO(6311442-38)</i>

Add	depth of 13.3 metres (See Chart 1, I10)	45°02'31.9"N 061°44'46.8"W <i>DFO(6311442-39)</i>
Delete	depth of 14.9 metres (See Chart 1, I10)	45°02'23.4"N 061°44'55.0"W <i>DFO(6311442-40)</i>
Add	depth of 11.7 metres (See Chart 1, I10)	45°02'26.7"N 061°44'55.4"W <i>DFO(6311442-41)</i>
Add	private yellow ODAS/SADO lighted conical Fl Y, (Priv) (See Chart 1, Q58, Q70)	44°59'21.1"N 061°45'55.8"W <i>DFO(6311442-42)</i>
<b>4278 - Great Bras D'Or and / et St Patricks Channel - New Edition - 26-AUG-2016 - NAD 1983</b>		
04-APR-2025		LNMD. 13-SEP-2024
Amend	F to read LFI against light (See Chart 1, P10.5, P16)	45°57'40.6"N 061°04'40.5"W <i>(G2024569) LL(831) DFO(6311890-01)</i>
<b>4301 - Canso Harbour to Strait of Canso - New Chart - 31-MAY-2019 - World Geodetic System 1984</b>		
04-APR-2025		LNMD. 26-APR-2024
Delete	legend 'Closed/Fermé'	45°35'11.5"N 061°06'03.1"W <i>DFO(6311931-01)</i>
<b>4321 - Cape Canso to / à Liscomb Island - New Edition - 08-OCT-2004 - NAD 1983</b>		
25-APR-2025		LNMD. 21-JUN-2024
Add	depth of 4.8 metres (See Chart 1, I10)	45°05'19.3"N 061°49'39.8"W <i>DFO(6311442-01)</i>
Add	depth of 6.4 metres (See Chart 1, I10)	45°05'24.6"N 061°48'33.7"W <i>DFO(6311442-05)</i>
Replace	depth of 17.1 metres with depth of 14.7 metres (See Chart 1, I10)	45°05'02.3"N 061°48'37.6"W <i>DFO(6311442-08)</i>
Add	depth of 8.8 metres (See Chart 1, I10)	45°05'03.9"N 061°48'01.6"W <i>DFO(6311442-13)</i>
Replace	depth of 6.4 metres with depth of 3.7 metres (See Chart 1, I10)	45°05'04.0"N 061°47'07.0"W <i>DFO(6311442-16)</i>
Replace	depth of 13.4 metres with depth of 11.5 metres (See Chart 1, I10)	45°04'45.2"N 061°47'16.9"W <i>DFO(6311442-19)</i>
Replace	depth of 8.2 metres with depth of 7.2 metres (See Chart 1, I10)	45°05'09.9"N 061°44'29.5"W <i>DFO(6311442-24)</i>

Add	depth of 8.4 metres (See Chart 1, I10)	45°04'09.1"N 061°44'22.0"W <i>DFO(6311442-28)</i>
Add	depth of 4.7 metres (See Chart 1, I10)	45°04'02.2"N 061°44'26.7"W <i>DFO(6311442-29)</i>
Replace	depth of 20.7 metres with depth of 18.9 metres (See Chart 1, I10)	45°02'41.5"N 061°44'07.5"W <i>DFO(6311442-30)</i>
Replace	depth of 12.8 metres with depth of 11.3 metres (See Chart 1, I10)	45°03'29.4"N 061°43'32.5"W <i>DFO(6311442-31)</i>
Add	depth of 9 metres (See Chart 1, I10)	45°03'13.0"N 061°43'40.1"W <i>DFO(6311442-32)</i>
Delete	depth of 18.6 metres (See Chart 1, I10)	45°03'00.6"N 061°44'05.3"W <i>DFO(6311442-35)</i>
Add	depth of 16.6 metres (See Chart 1, I10)	45°03'08.7"N 061°44'08.3"W <i>DFO(6311442-36)</i>
Add	depth of 8.1 metres (See Chart 1, I10)	45°03'08.9"N 061°44'43.0"W <i>DFO(6311442-37)</i>
Add	depth of 10.4 metres (See Chart 1, I10)	45°02'44.3"N 061°44'57.4"W <i>DFO(6311442-38)</i>
Delete	depth of 14.9 metres (See Chart 1, I10)	45°02'23.4"N 061°44'55.0"W <i>DFO(6311442-40)</i>
Add	depth of 11.7 metres (See Chart 1, I10)	45°02'26.7"N 061°44'55.4"W <i>DFO(6311442-41)</i>
Add	private yellow ODAS/SADO lighted conical Fl Y, (Priv) (See Chart 1, Q58, Q70)	44°59'21.1"N 061°45'55.8"W <i>DFO(6311442-42)</i>
Delete	red and white fairway lighted pillar whistle buoy Mo(A), marked PU (See Chart 1, Qd)	45°09'21.5"N 061°07'28.2"W <i>(G2025003) LL(660) DFO(6311911-01)</i>

**4335 - Strait of Canso and Approaches / et les approches - New Edition - 04-JAN-2008 - NAD 1983**

04-APR-2025

LNM/D. 28-FEB-2025

Delete	legend 'Closed/Fermé'	45°35'10.9"N 061°06'00.7"W <i>DFO(6311931-01)</i>
--------	-----------------------	--

**4340 - Grand Manan - New Edition - 10-JAN-2003 - NAD 1983**

18-APR-2025

LNMD. 28-FEB-2025

Add wreck, least depth unknown, with legend PA Rep (2025)  
(See Chart 1, K29, B7, I3)

44°43'40.8"N 066°39'00.0"W

*DFO(6311935-01)*

**4403 - East Point to / à Cape Bear - New Edition - 04-APR-2003 - NAD 1983**

25-APR-2025

LNMD. 26-AUG-2022

Replace depth of 8 fathoms with depth of 7 fathoms, 4 feet  
(See Chart 1, I10)

46°20'23.8"N 062°15'22.2"W

*DFO(6311427-01)*

**4416 - Havre de Gaspé - New Edition - 26-APR-2024 - NAD 1983**

18-APR-2025

Delete depth of 7,5 metres  
(See Chart 1, I10)

48°49'26.7"N 064°26'06.2"W

*DFO(6411240-07)*

Add depth of 7,2 metres  
(See Chart 1, I10)

48°49'26.8"N 064°26'06.7"W

*DFO(6411240-08)*

**4416 - Quai Public/Public Wharf - New Edition - 26-APR-2024 - NAD 1983**

18-APR-2025

Delete depth of 8,8 metres  
(See Chart 1, I10)

48°49'29.1"N 064°26'12.6"W

*DFO(6411240-01)*

Add depth of 7,8 metres  
(See Chart 1, I10)

48°49'29.1"N 064°26'12.6"W

*DFO(6411240-02)*

Delete depth of 9,2 metres  
(See Chart 1, I10)

48°49'32.9"N 064°26'24.3"W

*DFO(6411240-05)*

Add depth of 8,9 metres  
(See Chart 1, I10)

48°49'33.0"N 064°26'24.4"W

*DFO(6411240-06)*

**4523 - Little Bay Arm and Approaches / et les approches - New Edition - 20-DEC-2002 - NAD 1983**

04-APR-2025

LNMD. 06-DEC-2024

Delete red starboard hand lighted spar buoy FI R, marked DB2  
(See Chart 1, Qb)

49°36'38.9"N 055°53'50.6"W

*(N2025005) LL(336.21) DFO(6311915-01)*

Delete green port hand lighted spar buoy FI G, marked DB3  
(See Chart 1, Qc)

49°36'10.4"N 055°54'34.1"W

*(N2025006) LL(336.25) DFO(6311916-01)*

Delete red starboard hand lighted spar buoy FI R, marked DB4  
(See Chart 1, Qb)

49°36'11.9"N 055°54'36.1"W

*(N2025007) LL(336.26) DFO(6311917-01)*



**4523 - Otter Island Narrows - New Edition - 20-DEC-2002 - NAD 1983**

04-APR-2025

LNm/D. 06-DEC-2024

Delete green port hand lighted spar buoy FI G, marked DB3  
(See Chart 1, Qc) 49°36'10.4"N 055°54'34.3"W  
(N2025006) LL(336.25) DFO(6311916-01)

Delete red starboard hand lighted spar buoy FI R, marked DB4  
(See Chart 1, Qb) 49°36'11.9"N 055°54'36.3"W  
(N2025007) LL(336.26) DFO(6311917-01)

**4585 - Green Head to / à Little Bay Island - New Edition - 30-MAY-2003 - NAD 1983**

04-APR-2025

LNm/D. 06-DEC-2024

Delete red starboard hand lighted spar buoy FI R, marked DB2  
(See Chart 1, Qb) 49°36'39.6"N 055°53'46.8"W  
(N2025005) LL(336.21) DFO(6311915-01)

Delete green port hand lighted spar buoy FI G, marked DB3  
(See Chart 1, Qc) 49°36'10.5"N 055°54'30.2"W  
(N2025006) LL(336.25) DFO(6311916-01)

Delete red starboard hand lighted spar buoy FI R, marked DB4  
(See Chart 1, Qb) 49°36'13.1"N 055°54'32.7"W  
(N2025007) LL(336.26) DFO(6311917-01)

**4905 - Cape Tormentine à / to West Point - New Edition - 29-DEC-2000 - NAD 1983**

04-APR-2025

LNm/D. 24-MAY-2024

Amend FI R to read LFI R against light  
(See Chart 1, P10.5, P16) 46°11'56.9"N 064°09'41.9"W  
(G2024546) LL(1099.5) DFO(6311857-01)

**4921 - Quai / Wharf Grande-Rivière - New Edition - 02-DEC-2016 - NAD 1983**

25-APR-2025

LNm/D. 14-MAR-2025

Delete depth of 3,0 metres  
(See Chart 1, I10) 48°23'39.2"N 064°29'42.8"W  
DFO(6411265-03)

Add depth of 2,6 metres  
(See Chart 1, I10) 48°23'39.1"N 064°29'42.6"W  
DFO(6411265-04)

**4921 - Sainte-Thérèse-de-Gaspé - New Edition - 02-DEC-2016 - NAD 1983**

25-APR-2025

LNm/D. 14-MAR-2025

Delete depth of 0,8 metres  
(See Chart 1, I10) 48°24'58.0"N 064°23'47.1"W  
DFO(6411265-05)

Add depth of 0,1 metres  
(See Chart 1, I10) 48°24'58.2"N 064°23'47.2"W  
DFO(6411265-06)

Add depth of 0,4 metres  
(See Chart 1, I10) 48°24'57.2"N 064°23'46.0"W  
DFO(6411265-07)

Amend legend 2,3 m (2023) to read 2,3 m (2024)  
(See Chart 1, I22) 48°24'57.4"N 064°23'44.8"W  
DFO(6411265-09)

Amend	legend 2,7 m (2023) to read 2,8 m (2024) (See Chart 1, I22)	48°24'53.0"N 064°23'38.7"W  DFO(6411265-10)
-------	--	---

Amend	legend 3,3 m (2023) to read 3 m (2024) (See Chart 1, I22)	48°24'51.5"N 064°23'33.7"W  DFO(6411265-11)
-------	--	---

**4934 - Boughton Bay to Basin Head Harbour - New Chart - 30-JUN-2023 - World Geodetic System 1984**

25-APR-2025

LNm/D. 07-MAR-2025

Add	depth of 19.8 metres (See Chart 1, I10)	46°19'48.1"N 062°15'18.5"W  DFO(6311427-02)
-----	--	---

**4934 - Souris Harbour - New Chart - 30-JUN-2023 - World Geodetic System 1984**

25-APR-2025

LNm/D. 07-MAR-2025

Delete	depth of 1.7 metres (See Chart 1, I10)	46°20'57.7"N 062°14'59.9"W  DFO(6311427-03)
--------	---	---

Add	depth of 1.4 metres (See Chart 1, I10)	46°20'57.9"N 062°14'59.5"W  DFO(6311427-04)
-----	---	---

Add	depth of 1.4 metres (See Chart 1, I10)	46°20'57.4"N 062°15'00.2"W  DFO(6311427-05)
-----	---	---

Add	depth of 4.9 metres (See Chart 1, I10)	46°20'50.2"N 062°14'52.9"W  DFO(6311427-06)
-----	---	---

Add	depth of 5 metres (See Chart 1, I10)	46°20'52.1"N 062°15'13.7"W  DFO(6311427-07)
-----	---	---

Add	depth of 1.9 metres (See Chart 1, I10)	46°20'51.8"N 062°15'19.0"W  DFO(6311427-08)
-----	---	---

Replace	depth of 3.6 metres with depth of 2.7 metres (See Chart 1, I10)	46°20'52.4"N 062°15'19.4"W  DFO(6311427-09)
---------	--	---

Delete	depth of 4 metres (See Chart 1, I10)	46°20'49.8"N 062°15'20.0"W  DFO(6311427-10)
--------	---	---

Add	depth of 3.6 metres (See Chart 1, I10)	46°20'50.0"N 062°15'20.3"W  DFO(6311427-11)
-----	---	---

Add	depth of 4.8 metres (See Chart 1, I10)	46°20'48.9"N 062°15'21.7"W  DFO(6311427-12)
-----	---	---

Delete	depth of 5.5 metres (See Chart 1, I10)	46°20'51.6"N 062°15'23.1"W  DFO(6311427-13)
--------	---	---

Add	depth of 4.8 metres (See Chart 1, I10)	46°20'51.5"N 062°15'22.9"W <i>DFO(6311427-14)</i>
Replace	depth of 6.3 metres with depth of 5.8 metres (See Chart 1, I10)	46°20'50.4"N 062°15'24.1"W <i>DFO(6311427-15)</i>
Add	depth of 7.3 metres (See Chart 1, I10)	46°20'52.5"N 062°15'23.9"W <i>DFO(6311427-16)</i>
Add	depth of 6.5 metres (See Chart 1, I10)	46°20'55.1"N 062°15'14.6"W <i>DFO(6311427-17)</i>
Add	depth of 6.5 metres (See Chart 1, I10)	46°20'55.5"N 062°15'16.1"W <i>DFO(6311427-18)</i>
Delete	depth of 6.1 metres (See Chart 1, I10)	46°20'56.5"N 062°15'17.7"W <i>DFO(6311427-19)</i>
Add	depth of 5.5 metres (See Chart 1, I10)	46°20'56.6"N 062°15'17.2"W <i>DFO(6311427-20)</i>
Add	depth of 5.7 metres (See Chart 1, I10)	46°20'57.7"N 062°15'12.9"W <i>DFO(6311427-21)</i>
Delete	depth of 6.5 metres (See Chart 1, I10)	46°20'57.6"N 062°15'20.0"W <i>DFO(6311427-22)</i>
Add	depth of 5.5 metres (See Chart 1, I10)	46°20'58.0"N 062°15'19.9"W <i>DFO(6311427-23)</i>
Add	depth of 9.9 metres (See Chart 1, I10)	46°20'42.1"N 062°15'24.4"W <i>DFO(6311427-24)</i>
Replace	depth of 10 metres with depth of 9.6 metres (See Chart 1, I10)	46°20'41.5"N 062°15'22.4"W <i>DFO(6311427-25)</i>
Add	depth of 9.6 metres (See Chart 1, I10)	46°20'40.8"N 062°15'21.8"W <i>DFO(6311427-26)</i>

**5027 - Murphy Head to / aux Button Islands - New Chart - 27-AUG-2010 - NAD 1983**  
25-APR-2025

Add	underwater rock of unknown depth, dangerous to surface navigation with legend 'Rep (2024)' (See Chart 1, K13, I3.2)	59°52'34.0"N 063°58'31.0"W <i>DFO(6311940-01)</i>
-----	---	--

**5062 - Osborne Point to / à Cape Kakkiviak - New Chart - 27-MAR-2009 - NAD 1983**

25-APR-2025

LNMD. 09-AUG-2013

Add underwater rock of unknown depth, dangerous to surface navigation with legend 'Rep (2024)'  
(See Chart 1, K13, I3.2)

59°52'34.0"N 063°58'31.0"W

*DFO(6311940-01)*

**5165 - Goose Bay Narrows - New Chart - 28-FEB-2020 - NAD 1983**

18-APR-2025

LNMD. 09-FEB-2024

Add depth of 9.4 metres  
(See Chart 1, I10)

53°25'04.4"N 060°00'43.3"W

*DFO(6311937-01)*

Add depth of 9.3 metres  
(See Chart 1, I10)

53°26'04.2"N 059°58'56.5"W

*DFO(6311937-02)*

Amend 9,5 m (2018) to read 9,5 m (2024)  
(See Chart 1, I22)

53°25'36.3"N 059°59'45.5"W

*DFO(6311937-03)*

**5628 - Rankin Inlet Including / Y Compris Melvin Bay And/ Et Prairie Bay - New Chart - 08-AUG-1997 - NAD 1983**

04-APR-2025

LNMD. 13-JUL-2018

Delete depth of 1.3 metres  
(See Chart 1, I10)  
This notice affects Electronic Navigational Chart: CA573301

62°47'41.2"N 092°01'06.7"W

*DFO(6605453-01)*

Delete depth of 2.3 metres  
(See Chart 1, I10)  
This notice affects Electronic Navigational Chart: CA373325, CA573301

62°47'44.7"N 092°01'27.8"W

*DFO(6605453-02)*

Add depth of 0.7 metres  
(See Chart 1, I10)  
This notice affects Electronic Navigational Chart: CA573301

62°47'41.5"N 092°01'05.3"W

*DFO(6605453-03)*

Add depth of 1.8 metres  
(See Chart 1, I10)  
This notice affects Electronic Navigational Chart: CA373325, CA573301

62°47'45.0"N 092°01'28.3"W

*DFO(6605453-04)*

**5629 - Marble Island to/à Rankin Inlet - New Chart - 27-OCT-2000 - NAD 1983**

04-APR-2025

LNMD. 13-JUL-2018

Delete depth of 2.3 metres  
(See Chart 1, I10)  
This notice affects Electronic Navigational Chart: CA373325, CA573301

62°47'44.7"N 092°01'27.8"W

*DFO(6605453-02)*

Add depth of 1.8 metres  
(See Chart 1, I10)  
This notice affects Electronic Navigational Chart: CA373325, CA573301

62°47'45.0"N 092°01'28.3"W

*DFO(6605453-04)*

**6251 - Red River / Rivière Rouge to/à Gull Harbour - Sheet/Feuille 1 - New Edition - 26-MAY-2000 - NAD 1927**

25-APR-2025

LNMD. 13-DEC-2024

Amend red starboard hand spar buoy, marked D16 to read red starboard hand lighted spar buoy QR, marked D16 50°35'42.6"N 096°55'57.2"W  
(See Chart 1, Qb)  
(P2025011) LL(1567.8) DFO(6605484-01)

**6273 - North Manitou Island to/à Whiskey Jack Island - Sheet/Feuille 1 - New Edition - 24-JUN-2005 - Unknown**

25-APR-2025

LNMD. 14-FEB-2014

Reposition green port hand spar buoy, marked J7 from 52°46'20.0"N 100°03'00.0"W  
(See Chart 1, Qc) to 52°45'08.3"N 100°02'09.7"W  
(P2025010) DFO(6605483-01)

**7184 - Broughton Harbour and Landing Beach/et plage d'atterrissage - New Edition - 31-AUG-2012 - NAD 1983**

04-APR-2025

Delete beacon marked, Bn Or 67°30'02.0"N 064°04'27.2"W  
(See Chart 1, Q81)  
This notice affects Electronic Navigational Chart: CA473365, CA573366  
DFO(6605367-01)

Delete tower and legend Ro Trs 67°29'13.9"N 063°59'50.5"W  
(See Chart 1, E28)  
This notice affects Electronic Navigational Chart: CA473365, CA573366  
DFO(6605367-02)

Delete tower 67°29'13.3"N 063°59'52.7"W  
(See Chart 1, E28)  
This notice affects Electronic Navigational Chart: CA473365, CA573366  
DFO(6605367-03)

**7184 - Broughton Island and Approaches/et les Approches - New Edition - 31-AUG-2012 - NAD 1983**

04-APR-2025

Delete beacon marked, Bn Or 67°30'02.0"N 064°04'27.2"W  
(See Chart 1, Q81)  
This notice affects Electronic Navigational Chart: CA473365, CA573366  
DFO(6605367-01)

Delete tower and legend Ro 67°29'13.9"N 063°59'50.5"W  
(See Chart 1, E28)  
This notice affects Electronic Navigational Chart: CA473365, CA573366  
DFO(6605367-02)

**7212 - Bylot Island and Adjacent Channels - New Edition - 06-JUL-2018 - World Geodetic System 1984**

04-APR-2025

Delete depth of 16.8 metres 73°43'24.0"N 081°13'34.7"W  
(See Chart 1, I10)  
This notice affects Electronic Navigational Chart: CA273422  
DFO(6605456-01)

Add depth of 13.8 metres 73°43'24.4"N 081°13'37.0"W  
(See Chart 1, I10)  
This notice affects Electronic Navigational Chart: CA273422  
DFO(6605456-02)

**7220 - Lancaster Sound, Eastern Approaches/Approches Est - New Edition - 02-NOV-1979 - NAD 1927**

04-APR-2025

LNMD. 29-AUG-2014

Delete            depth of 16.8 metres            73°43'17.3"N 081°13'43.5"W  
                    (See Chart 1, I10)  
                    This notice affects Electronic Navigational Chart: CA273422

*DFO(6605456-01)*

Add             depth of 13.8 metres            73°43'21.7"N 081°14'07.6"W  
                    (See Chart 1, I10)  
                    This notice affects Electronic Navigational Chart: CA273422

*DFO(6605456-02)*

**8046 - Button Islands to / à Cod Island - New Edition - 23-MAY-2003 - Unknown**

25-APR-2025

LNMD. 03-NOV-2023

Add             underwater rock of unknown depth, dangerous to surface navigation with  
                    legend 'Rep (2024)'  
                    (See Chart 1, K13, I3.2)

*DFO(6311940-01)*

## Section 3: Radio Aids to Marine Navigation Corrections

### \*425/25 Radio Aids to Marine Navigation 2025 (Atlantic, St. Lawrence, Great Lakes, Lake Winnipeg, Arctic and Pacific)

**Page 4-44 to 4-46**

#### AMEND AS FOLLOWS:

#### 4.2.8. Pre-Arrival Information Report (PAIR)

Note: Pursuant to the [Marine Transportation Security Regulations \(MTSR\)](#), the [Security Measures Respecting Designated Tall Ship Events](#) and the [Security Measures Respecting Tall Ships and Marine Facilities that Interface with Tall Ships](#); vessels entering Canadian waters are required to submit pre-arrival information to Transport Canada. However please note that the following pre-arrival information requirement does not apply to fishing vessels, pleasure craft, government vessels, nor to vessels operating solely on the Great Lakes or to the portions of a vessel's voyage on the Great Lakes after pre-arrival information has been given prior to its entrance into the St. Lawrence Seaway.

Requirement:

The master of the following vessels (including tall ships), engaged on an international voyage:

- a) SOLAS vessels of 500 tons gross tonnage or more;
- b) SOLAS and NON-SOLAS vessels carrying 12 passengers or more;
- c) NON-SOLAS vessels that are more than 100 tons, gross tonnage; and
- d) NON-SOLAS vessels that are a towing vessel engaged in towing a barge astern or alongside or pushing ahead, if the barge is carrying certain dangerous cargoes;

shall ensure the vessel does not enter Canadian waters until they submit their 96 hour pre-arrival information to Transport Canada:

- a) at least 96 hours prior to entering Canadian Waters
- b) if the duration of the segment of the voyage before entering Canadian waters is less than 96 hours but more than 24 hours, at least 24 hours before entering Canadian waters; or
- c) if the duration of the segment of the voyage before entering Canadian waters is less than 24 hours, as soon as practicable before entering Canadian waters but no later than the time of departure from the last port of call.

Transport Canada requests the pre-arrival information report (PAIR) be submitted using the 96-Hour PAIR PDF form. Forms can be obtained by emailing:

[96@tc.gc.ca](mailto:96@tc.gc.ca) or [TC.PAIR-NPA.TC@tc.gc.ca](mailto:TC.PAIR-NPA.TC@tc.gc.ca) – to receive an English PAIR Form

[TC.NPA-PAIR.TC@tc.gc.ca](mailto:TC.NPA-PAIR.TC@tc.gc.ca) – to receive a French PAIR Form

The 96hr PAIR report is not to be confused with the 24hr reporting requirements for the Canadian Coast Guard Vessel Traffic Services as noted in Section 3.7 of this document.

Once an email is sent, an attached PDF form will automatically be forwarded to the requestor. Forms can be saved and emailed to Transport Canada according to one of the following:

#### Vessels entering WESTERN CANADA

~~Transport Canada Marine Security Operations Centre West~~

[marsecwest-surmarouest@tc.gc.ca](mailto:marsecwest-surmarouest@tc.gc.ca)

~~1-250-363-4850~~

**Vessels entering EASTERN CANADA, the ST. LAWRENCE SEAWAY or the CANADIAN ARCTIC**

~~Transport Canada Marine Security Operations Centre East~~

~~[east.msoc@tc.gc.ca](mailto:east.msoc@tc.gc.ca)~~

~~1-902-427-8003~~

For any inquiries, please contact Transport Canada via the above email addresses and Transport Canada will respond during business hours from 11:00 AM UTC to 10:00 PM UTC, seven days a week.

It is the responsibility of the Master of the vessel to ensure that all information provided to the Government of Canada (Transport Canada) in the PAIR is complete and accurate. If there is any change in the pre-arrival information reported, the master shall ensure the change is reported prior to entering Canadian waters. If a change occurs after the vessel has entered Canadian waters, that the change be reported before the vessel's first interface with a marine facility in Canada. Masters of vessels subject to the *Marine Transportation Security Regulations* (as described above) failing to submit, or submitting incomplete or inaccurate pre-arrival information, risk subjecting their vessel to control actions such as, but not limited to: inspection, detention, redirection or expulsion from Canadian waters. The Master may also be subject to administrative monetary penalty should regulatory requirements not be satisfied. Please be advised that the initial Canadian port of call should be the first marine facility you intend to visit for the purpose of your business, rather than the pilotage station.

If the Master is unable to populate and submit the PAIR PDF form it is recommended that the Master engage the Company Security Officer or other designated person ashore to complete and submit the PAIR PDF form on their behalf. The responsibility for compliance with the PAIR submission remains with the Master.

If, for any reason, vessels are unable to send the PAIR via the above requested methods, the following contingencies should be considered:

- a) if unable to get a digital PDF form, see the section below for the required information
- b) if the email system is unserviceable, the ship may send the required information (see section below) via any Canadian Coast Guard Marine Communications and Traffic Services (MCTS) centre. Contact information for MCTS Centres may be found in [Part 2](#) of this publication.

The vessel's pre-arrival information shall include the following:

- a) its name;
- b) its country of registry;
- c) the name of its registered owner;
- d) the name of its operator;
- e) the name of its classification society (not applicable to tall ships);
- f) its international radio call sign;
- g) its International Ship Security Certificate, Canadian Vessel Security Certificate or ship security compliance document number;
- h) its International Maritime Organization number, if it is a SOLAS ship;
  - i. the IMO Unique Company Identification Number of its company and the IMO Unique Registered Owner Identification Number of its owner
- i) the date of issuance, date of expiry and name of the issuing body of its International Ship Security Certificate, Canadian Vessel Security Certificate, or ship security document;
- j) confirmation that the vessel has an approved vessel security plan;
- k) the current MARSEC level;



- l) a statement of when its last 10 declarations of security were completed;
- m) details of any security breaches, security incidents or security threats involving the vessel during the last ten calls at marine facilities and during the time spent at sea between those calls;
- n) details of any deficiencies in its security equipment and systems, including the communication systems, and the way in which the master of the vessel intends to correct them;
- o) if applicable, the name of its agent and contact person and their 24-hour telephone and facsimile numbers (not applicable to tall ships);
- p) if applicable, the name of the vessel's charterer;
- q) its position and the date and time at which it reached that position;
- r) its course and speed;
- s) its first port of call in Canada, with the estimated time of arrival at that port of call, and, if applicable, its final destination with the estimated time of arrival at that destination;
- t) the name of a contact person at the marine facility that it will visit and their 24-hour telephone and facsimile numbers;
- u) the following information in respect of its last ten marine facilities visited:
  - i. the receiving facility;
  - ii. the marine facility visited;
  - iii. the city and country;
  - iv. the date and time of arrival, and
  - v. the date and time of departure;
- v) a general description of the cargo, including cargo amount (not applicable to tall ships);
- w) if applicable, the presence and description of any dangerous substances or devices on board; and
- x) the following contact information:
  - i. the name of the master
  - ii. an email address, if applicable, and
  - iii. a satellite or cellular telephone number, if applicable.

Transport Canada Marine Security will confirm successful processing of the 96 hour PAIR and review of the ISSC via email once processing is completed. This email may also contain further instructions for entering Canadian waters.

Request all pages of the vessel's Interim International Ship Security Certificate (IISCC), International Ship Security Certificate (ISSC), Interim Canadian Vessel Security Certificate (ICVSC), Canadian Vessel Security Certificate (CVSC) or Ship Security Compliance document be included with the Pre-Arrival Information Report.

For any additional questions or queries regarding pre-arrival information, please contact ~~the appropriate Marine Security Operations Centre (East or West) via email or telephone as provided earlier in this section~~ Transport Canada at the following email addresses: [marsecwest-surmarouest@tc.gc.ca](mailto:marsecwest-surmarouest@tc.gc.ca) or [east.msoc@tc.gc.ca](mailto:east.msoc@tc.gc.ca).

## Section 4: Canadian Sailing Directions Corrections

---

The following **Canadian Sailing Directions** volumes have recently been updated on the [Canadian Hydrographic Service website](#).

No.	Title
<b>Atlantic Coast</b>	
<b>ATL 108</b>	Gulf of St. Lawrence (Southwest Portion)
<b>ATL 109</b>	Gulf of St. Lawrence (Northeast Portion)
<b>ATL 111</b>	St. Lawrence River, Île Verte to Québec and Fjord du Saguenay
<b>ATL 120</b>	Labrador, Camp Islands to Hamilton Inlet (including Lake Melville)
<b>ATL 121</b>	Labrador, Hamilton Inlet to Cape Chidley (including Button Islands and Gray Strait)
<b>Central Canada</b>	
<b>CEN 304</b>	Detroit River, Lake St. Clair, St. Clair River
<b>CEN 309</b>	Trent-Severn Waterway
<b>Pacific Coast</b>	
<b>PAC 200</b>	General Information, Pacific Coast

Each volume includes a section entitled “Record of Changes” which lists all updates that are incorporated during the current calendar year.

## Section 5: List of Lights, Buoys and Fog Signals Corrections

The amendments are **highlighted** and deletions are **crossed out**. For general and region-specific information on the List of Lights, click on the following links: [Newfoundland and Labrador Coast](#), [Atlantic Coast](#), [Inland Waters](#) and [Pacific Coast](#).

No.	Name	Position ----- Latitude N. Longitude W.	Light Characteristics	Focal Height in m. above water	Nomi- nal Range	Description ----- Height in meters above ground	Remarks ----- Fog Signals
-----	------	--	--------------------------	--	-----------------------	--	---------------------------------

### NEWFOUNDLAND AND LABRADOR COAST

#### STRAIT OF BELLE ISLE (LL 211 – 234)

215.8 <b>H0145.7</b>	St. Barbe Harbour.	51 12 40.3 056 46 01.0	F G .....	9.0	11	Square skeleton tower, white daymark <b>with</b> black vertical stripe. 6.4	<b>Visible in line of range.</b> <b>Year round.</b>
215.9 <b>H0145.71</b>	St. Barbe range	105°00' 140 m from front.	F G .....	13.0	11	Square skeleton tower, white daymark <b>with</b> black vertical stripe. 3.7	<b>Visible in line of range.</b> <b>Year round.</b>  Chart:4667 <b>Edn 04/25 (N25-018, 019)</b>

#### NEWFOUNDLAND AND LABRADOR COAST (LL 269.99 – 325.23)

319.31 <b>H0071.33</b>	<b>Ailik Islands Light</b>	55 13 31.0 059 14 15.9	Q R 1s	11.4	3	Square skeleton tower, red and white rectangular daymark. 4.7	<b>Flash 0.3 s; eclipse 0.7 s.</b> Seasonal.  Chart:5046 <b>Edn 04/25 (N25-017)</b>
321.05 <b>H0071</b>	<b>The Clusters Light</b>	W. of Turnavik Island. 55 16 49.2 059 30 13.1	Fl R 4s	5.0	7	Square skeleton tower, <b>red and white rectangular</b> daymark. 4.7	Seasonal.  Chart:5046 <b>Edn 04/25 (N25-020)</b>
322 H0068	<b>Napakataktalik (Manuel) Island Light (Napakataktalik)</b>	55 33 06.6 060 14 54.0	Fl W 4s	35.2	5	Square skeleton tower, red and white rectangular daymark. 4.6	Seasonal.  Chart:5047 <b>Edn 04/25 (N25-021)</b>
325.2	<b>Strathcona Run (Labrador) light buoy NNS3</b>	<b>Nain.</b> 56 33 42.3 061 35 45.0	Fl G 4s	.....	.....	<b>Green spar, marked "NNS3".</b>	Seasonal.  Chart:5052 <b>Edn 04/25 (N25-024)</b>

### ATLANTIC COAST

#### BAY OF FUNDY, N.B. – WEST (LL 5.8 – 114)

84.1	Beaver Harbour Wharf Light	45 04 08.7 066 44 18.1	Fl Y 5s	3.0	2	<b>Cylindrical tower.</b>	<b>Flash 1 s; eclipse 4 s.</b> <b>Year round.</b>  Chart:4116 <b>Edn 04/25 (F25-002)</b>
113.1	Saint John Pier Hazard Light	Pier 13. 45 15 33.0 066 03 38.5	LFi G 6s	.....	2	<b>Green pipe tower.</b>	<b>Flash 2 s; eclipse 4 s.</b> Radar reflector. Operates 24 h. <b>Year round.</b>  Chart:4117 <b>Edn 04/25 (F25-005)</b>

Notices to Mariners – Monthly Eastern Edition  
Section 5: List of Lights, Buoys and Fog Signals Corrections

No.	Name	Position ----- Latitude N. Longitude W.	Light Characteristics	Focal Height in m. above water	Nomi- nal Range	Description ----- Height in meters above ground	Remarks ----- Fog Signals
-----	------	--	--------------------------	--	-----------------------	--	---------------------------------

**NOVA SCOTIA, SOUTHEAST COAST (LL 327 – 684.02)**

360.8	Lower Sandy Point South Breakwater Light	43 40 44.0 065 18 07.1	Fl R 5s	.....	2	Pipe tower, red and white triangular daymark.	Flash 1 s; eclipse 4 s. Year round.  Chart:4241 Edn 04/25 (F25-006)
564.03	East Chezzetcook light buoy HJ4	44 41 18.8 063 13 47.7	Q R 1s	.....	.....	Red spar, marked "HJ4".	Seasonal.  Chart:N/A Edn 04/25 (F25-004)

**ST. LAWRENCE RIVER, RIVIÈRE DU LOUP – SOREL (LL 1823.8 – 2185.1)**

2147.2	Louiseville Entrance Channel light buoy SH1						Delete from list.  Chart:1312 Edn 04/25 (Q25-029)
2147.4	Louiseville Entrance Channel light buoy SH9						Delete from list.  Chart:1312 Edn 04/25 (Q25-030)
2147.6	Louiseville Entrance Channel light buoy SH20						Delete from list.  Chart:1312 Edn 04/25 (Q25-031)

**INLAND WATERS**

**ST. LAWRENCE SEAWAY, CANAL DE BEAUHARNOIS TO KINGSTON (LL 33 – 401)**

123 H2556	Lancaster Light D50 range	NNW. of Butternut Island. 45 06 01.2 074 29 28.2	Iso G 4s	11.7	13	White cylindrical tower with red top, black triangular daymark with red vertical stripe marked "D50". 10.2	Visible in line of range. Seasonal.  Chart:1432 Edn 04/25 (B25-011)
124 H2556.1		228°45' 786.3 m from front.	F G .....	24.1	13	White cylindrical tower, orange triangular daymark with black vertical stripe. 24.2	Visible in line of range. Seasonal.  Chart:1436 Edn 04/25 (B25-010)
355	Haffie Shoal	On rock. 44 27 32.7 075 50 40.0	Fl R 4s	8.0	3	Mast, white rectangular daymark with red top. 4.9	Seasonal.  Chart:1436 Edn 04/25 (B25-010)

**LAKE ONTARIO (LL 403.4 – 551)**

487	Brighton front range	No. 2, SE. of Brighton. 44 01 07.2 077 43 16.1	Iso W 2s	9.4	5	White cylindrical tower, orange triangular daymark, black vertical stripe. 7.2	Seasonal.  Delete from list.  Chart:2059 Edn 04/25 (B25-009)
488							

Notices to Mariners – Monthly Eastern Edition  
Section 5: List of Lights, Buoys and Fog Signals Corrections

No.	Name	Position ----- Latitude N. Longitude W.	Light Characteristics			Focal Height in m. above water	Nomi- nal Range	Description ----- Height in meters above ground	Remarks ----- Fog Signals
ST. MARYS RIVER (LL 1059.6 – 1081)									
1070	Canadian Canal, Upper Entrance range	On pier E. of steel plant dock. 46 30 53.1 084 22 17.5	F	R	.....	12.3	15	Square tower, black daymark with red vertical stripe. 10.5	Visible in line of range. Operates 24 h. Year round.
1071		050°48' 247.2 m from front.	F	R	.....	19.1	15	Square tower, black daymark with red vertical stripe. 16.8	Visible in line of range. Operates 24 h. Year round.
Chart:14884(U.S.) Edn 04/25 (D25-017, 018)									
LAKE NIPIGON (LL 1162 – 1171)									
1167	Red Willow Islands	End of island. 49 41 18.0 088 10 34.0	Fl	W	4s	16.5	5	Cylindrical mast, red and white rectangular daymark. 4.9	Seasonal. Chart:N/A Edn 04/25 (D25-019)
1171	Champlain Point	49 46 28.0 088 55 07.0	Fl	W	4s	11.5	5	Cylindrical mast, red and white rectangular daymark. 4.9	Seasonal. Chart:N/A Edn 04/25 (D25-016)
LAKE WINNIPEG (LL 1563.1 – 1625)									
1612.3	Wicked Point light buoy CL3								Delete from list. Chart:6241 Edn 04/25 (P25-012)
1612.4	Gull Bay light buoy CL4								Delete from list. Chart:6241 Edn 04/25 (P25-013)
MACKENZIE RIVER AND BAY (LL 1716.96 – 2540)									
2509	Tuktoyaktuk Turning light buoy T15	In Kugmallit Bay. 69 28 03.6 133 00 55.2	Fl	G	4s	.....	.....	Green, marked "T15".	Seasonal. Chart:7685 Edn 04/25 (A25-035)
HUDSON STRAIT AND BAY (LL 2545 – 2621)									
2546 H0035	Munn Bay (Coral Harbour)	W. of Coral Harbour, Southampton Island. 64 07 39.5 083 15 11.2	Fl	W	5s	21.0	.....	Square tower, orange rectangular daymark. 11.5	Flash 1 s; eclipse 4 s. Omnidirectional. Radar reflector. Seasonal (in place year round). Position in NAD83. Chart:5410 Edn 04/25 (A25-012)
2547 H0033.4	Walrus Island (Fisher Strait)	Centre of island. 63 16 28.5 083 41 05.2	Fl	W	6s	54.9	8	Square skeleton tower, orange rectangular daymark. 9.8	Flash 1 s; eclipse 5 s. Radar reflector. Seasonal (in place year round). Position in NAD83. Chart:5449 Edn 04/25 (A25-013)
2551 H0036.1	Cape Acadia (Mansel Island)	S. extremity of Mansel Island. 61 34 43.9 079 46 22.3	Fl	W	5s	23.5	.....	Square tower, orange rectangular daymark. 19.2	Flash 1 s; eclipse 4 s. Omnidirectional. Radar reflector. Seasonal (in place year round). Position in NAD83. Chart:5449 Edn 04/25 (A25-015)

Notices to Mariners – Monthly Eastern Edition  
Section 5: List of Lights, Buoys and Fog Signals Corrections

No.	Name	Position ----- Latitude N. Longitude W.	Light Characteristics			Focal Height in m. above water	Nomi- nal Range	Description ----- Height in meters above ground	Remarks ----- Fog Signals
2591 <i>H0058</i>	Rivière Koksoak River range	Kuujuaq. 58 27 37.8 068 12 24.0	F	G	.....	18.0	10	Square skeleton tower, orange daymark with black vertical stripe. 7.9	Operates at night only. Seasonal.
2592 <i>H0058.1</i>		197°38' 613.6 m from front.	F	G	.....	39.6	13	Square tower, orange daymark with black vertical stripe. 24.4	Visible in line of range. Operates at night only. Seasonal.
Chart:5338 Edn 04/25 (A25-024)									
2593 <i>H0058.4</i>		Kuujuaq. 58 29 42.6 068 10 17.3	Iso	W	2s	19.7	16	Square skeleton tower, orange daymark with black vertical stripe.	Visible in line of range. Operates at night only. Seasonal.
2594 <i>H0058.41</i>		189°36' 651.4 m from front.	Iso	W	2s	35.0	16	Square tower, orange daymark with black vertical stripe.	Visible in line of range. Operates at night only. Seasonal.
Chart:5338 Edn 04/25 (A25-025)									